

## Product datasheet for **AM33329PU-T**

### Chromogranin A (CHGA) Mouse Monoclonal Antibody [Clone ID: LK2H10 + PHE5 + CGA/414]

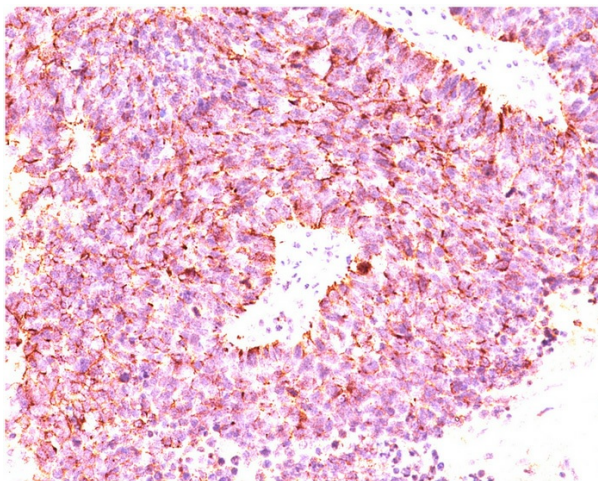
#### Product data:

Product Type:	Primary Antibodies
Clone Name:	LK2H10 + PHE5 + CGA/414
Applications:	FC, IF, IHC, IP, WB
Recommended Dilution:	<b>Western Blot:</b> 0.5-1 µg/ml. <b>Flow Cytometry:</b> 0.5-1 µg/10 <sup>6</sup> cells. <b>Immunofluorescence:</b> 0.5-1 µg/ml. <b>Immunoprecipitation:</b> 0.5-1 µg/500 µg protein. <b>Immunohistochemistry on Frozen and Formalin-Fixed Paraffin Sections:</b> 0.5-1 µg/ml for 30 min at RT. Staining of formalin-fixed tissues requires boiling tissue sections in 10mM citrate buffer, pH 6.0, for 10-20 min followed by cooling at RT for 20 minutes. <b>Positive Control:</b> PC12 cells, Adrenal gland, bowel, thyroid, pancreas, or pheochromocytoma.
Reactivity:	Human, Monkey, Mouse, Porcine, Rat
Host:	Mouse
Isotype:	IgG1
Clonality:	Monoclonal
Immunogen:	Human pheochromocytoma (LK2H10 and PHE5) and recombinant Human Chromogranin A protein (CGA414).
Specificity:	Recognizes Human and Monkey Chromogranin A. Other species not tested. Chromogranin A is present in neuroendocrine cells throughout the body, including the neuroendocrine cells of the large and small intestine, adrenal medulla and pancreatic islets. It is an excellent marker for carcinoid tumors, pheochromocytomas, paragangliomas, and other neuroendocrine tumors. Co-expression of chromogranin A and neuron specific enolase (NSE) is common in neuroendocrine neoplasms. Reportedly, co-expression of certain keratins and chromogranin indicates neuroendocrine lineage. The presence of strong anti-chromogranin staining and absence of anti-keratin staining should raise the possibility of paraganglioma. The co-expression of chromogranin and NSE is typical of neuroendocrine neoplasms. Most pituitary adenomas and prolactinomas readily express chromogranin. <b>Cellular Localization:</b> Finely granular cytoplasmic.



[View online »](#)

<b>Formulation:</b>	10mM PBS State: Purified State: Liquid purified IgG fraction from Bioreactor Concentrate Stabilizer: 0.05% BSA Preservative: 0.05% Sodium Azide
<b>Concentration:</b>	lot specific
<b>Purification:</b>	Protein A/G Chromatography
<b>Conjugation:</b>	Unconjugated
<b>Storage:</b>	Store undiluted at 2-8 °C.
<b>Stability:</b>	Shelf life: one year from despatch.
<b>Predicted Protein Size:</b>	68-75 kDa
<b>Gene Name:</b>	chromogranin A
<b>Database Link:</b>	<a href="#">Entrez Gene 1113 Human P10645</a>
<b>Background:</b>	Chromogranin A (a protein of 439-amino acid which is encoded on chromosome 14) is present in neuroendocrine cells throughout the body, including the neuroendocrine cells of the large and small intestine, adrenal medulla and pancreatic islets. It is an excellent marker for carcinoid tumors, pheochromocytomas, paragangliomas, and other neuroendocrine tumors. Coexpression of chromogranin A and neuron specific enolase (NSE) is common in neuroendocrine neoplasms.
<b>Synonyms:</b>	Chromogranin-A, CgA, CHGA, SP-I

**Product images:**

Formalin-Fixed, Paraffin-Embedded Human small cell lung carcinoma (SCLC) stained with Chromogranin A Antibody (Clone LK2H10 + PHE5 + CGA414).