

Product datasheet for **AM33320PU-T**

CD8A Mouse Monoclonal Antibody [Clone ID: C8/468 + C8/144B]

Product data:

Product Type:	Primary Antibodies
Clone Name:	C8/468 + C8/144B
Applications:	FC, IF, IHC, IP, WB
Recommended Dilution:	<p>Flow Cytometry: 0.5-1 µg/10⁶ cells.</p> <p>Immunofluorescence: 0.5-1 µg/ml.</p> <p>Western Blot (Not tested): 0.5-1 µg/ml.</p> <p>Immunoprecipitation (Not tested): 0.5-1 µg/500 µg protein lysate.</p> <p>Immunohistochemistry on Frozen Sections: 0.5-1 µg/ml.</p> <p>Immunohistochemistry on Paraffin Sections: 0.5-1 µg/ml.</p> <p>Incubation Time: 30 minutes at RT.</p> <p>Staining of formalin-fixed tissues requires boiling tissue sections in 10mM citrate buffer, pH 6.0, for 10-20 min followed by cooling at RT for 20 minutes.</p> <p>Positive Control: HuT78 or hPBL, Tonsil.</p>
Reactivity:	Human
Host:	Mouse
Isotype:	IgG1
Clonality:	Monoclonal
Immunogen:	Human CD8 recombinant protein (C8/468); A 13 amino acid synthetic peptide from the C-terminal cytoplasmic domain of alpha chain of human CD8 molecule (C8/144B).
Specificity:	Recognizes Human CD8. Other species not tested. Cellular Localization: Cell surface.
Formulation:	<p>10mM PBS</p> <p>State: Purified</p> <p>State: Liquid purified IgG fraction from Bioreactor Concentrate</p> <p>Stabilizer: 0.05% BSA</p> <p>Preservative: 0.05% Sodium Azide</p>
Concentration:	lot specific
Purification:	Protein A/G Chromatography
Conjugation:	Unconjugated



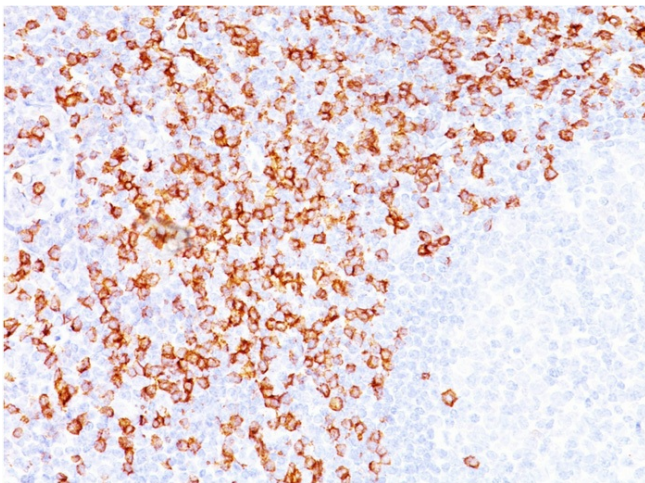
[View online »](#)

Storage:	Store undiluted at 2-8°C.
Stability:	Shelf life: one year from despatch.
Predicted Protein Size:	32 kDa
Gene Name:	CD8a molecule
Database Link:	Entrez Gene 925 Human P01732

Background: CD8 is a cell surface glycoprotein molecule expressed on the surface of a subset of T cells, generally the cytotoxic/suppressor cells, as well as on some natural killer cells. There are two forms of CD8, either as an alpha-alpha homodimer or alpha-beta heterodimer. The pathological role of CD8 has been observed in familial CD8 deficiency. A majority of thymocytes and a subpopulation of mature T cells and NK cells express CD8a. CD8 binds to MHC class 1 and through its association with protein tyrosine kinase p56lck plays a role in T cell development and activation of mature T cells. For mature T-cells, CD4 and CD8 are mutually exclusive, so anti-CD8, generally used in conjunction with anti-CD4. It is a useful marker for distinguishing helper/inducer T-lymphocytes, and most peripheral T-cell lymphomas are CD4+/CD8-. Anaplastic large cell lymphoma is usually CD4+ and CD8-, and in T-lymphoblastic lymphoma/leukemia, CD4 and CD8 are often co-expressed. CD8 is also found in littoral cell angioma of the spleen.

Synonyms: CD8 alpha chain, CD8A, MAL

Product images:



Formalin-Fixed, Paraffin-Embedded Human tonsil (20x) stained with CD8 Antibody (Clone C8/144B+C8/144B). Note Cell surface staining.