

## Product datasheet for **AM33312PU-T**

### Golgi Complex (Marker for Human Cells) Mouse Monoclonal Antibody [Clone ID: 371-4]

#### Product data:

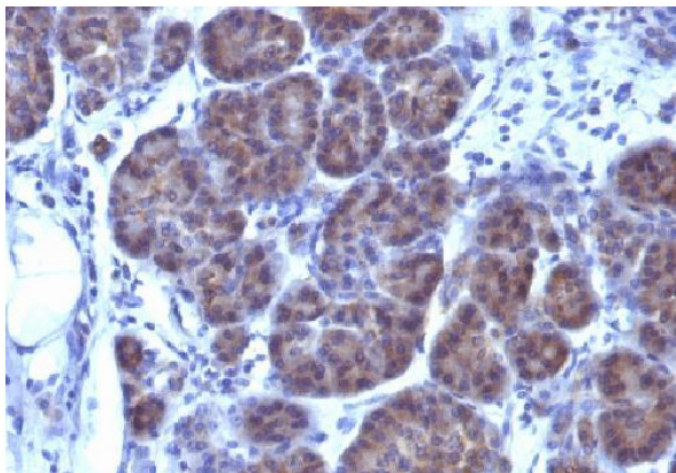
Product Type:	Primary Antibodies
Clone Name:	371-4
Applications:	FC, IF, IHC, WB
Recommended Dilution:	<b>Western Blotting:</b> 0.5-1.0 µg/ml. <b>Flow Cytometry:</b> 0.5-1 µg/million cells in 0.1 ml. <b>Immunofluorescence:</b> 0.5-1 µg/ml. <b>Immunocytochemistry</b> (Acetone or paraformaldehyde fixed): 0.5-1 µg/ml for 30 minutes. <b>Immunohistochemistry on Frozen Sections:</b> 0.5-1 µg/ml for 30 minutes at RT. <b>Immunohistochemistry on Paraffin Sections:</b> 0.5-1 µg/ml for 30 minutes at RT. Staining of formalin-fixed tissues requires boiling tissue sections in 10mM citrate buffer, pH 6.0, for 10-20 min followed by cooling at RT for 20 minutes. <b>Recommended Positive Control:</b> HepG2, A431 or HeLa cells, Placenta, Testis, Tonsil or lymph node.
Reactivity:	Human
Host:	Mouse
Isotype:	IgG1
Clonality:	Monoclonal
Immunogen:	SU-DHL-1 large cell lymphoma cells.



[View online »](#)

<b>Specificity:</b>	<p>This Monoclonal Antibody Clone 371-4 recognizes an antigen associated with the Golgi complex in Human cells. It can be used to stain the Golgi complex in cell or tissue preparations and can be used as a Golgi marker in subcellular fractions. It produces a diffuse staining pattern of the Golgi zone in normal and malignant cells. This Monoclonal Antibody is an excellent marker for Human cells in xenographic model research. It reacts specifically with Human cells. The Golgi apparatus is an organelle present in all eukaryotic cells that forms a part of the endomembrane system. The primary function of the Golgi apparatus is to process and package macromolecules synthesized by the cell for exocytosis or use within the cell. The Golgi is made up of a stack of flattened, membrane-bound sacs known as cisternae, with three functional regions: the cis face, medial region and trans face. Each region consists of various enzymes that selectively modify the macromolecules passing through them, depending on where they are destined to reside. Several spherical vesicles that have budded off of the Golgi are present surrounding the main cisternae.</p> <p><b>Cellular Localization:</b> Golgi complex in cytoplasm. <b>Negative Species:</b> Mouse, Rat.</p>
<b>Formulation:</b>	<p>10mM PBS State: Purified State: Liquid purified IgG fraction from Bioreactor Concentrate Stabilizer: 0.05% BSA Preservative: 0.05% Sodium Azide</p>
<b>Concentration:</b>	lot specific
<b>Purification:</b>	Protein A/G Chromatography
<b>Conjugation:</b>	Unconjugated
<b>Storage:</b>	<p>Store undiluted at 2-8°C. <b>DO NOT FREEZE!</b></p>
<b>Stability:</b>	Shelf life: one year from despatch.
<b>Synonyms:</b>	Golgi Complex, Golgi apparatus, Golgi zone

**Product images:**



Formalin-fixed, paraffin-embedded Human Pancreas stained with Golgi Monoclonal Antibody (Clone 371-4).