

## Product datasheet for **AM33297PU-T**

### TFF1 (57-84) Mouse Monoclonal Antibody [Clone ID: GE2 (same as R47/94)]

#### Product data:

Product Type:	Primary Antibodies
Clone Name:	GE2 (same as R47/94)
Applications:	FC, IF, IHC, IP, WB
Recommended Dilution:	<b>ELISA:</b> Use BSA free Antibody for coating. <b>Flow Cytometry:</b> 0.5-1 µg/million cells. <b>Immunofluorescence:</b> 0.5-1 µg/ml. <b>Western Blotting:</b> 0.5-1 µg/ml. <b>Immunoprecipitation:</b> 0.5-1 µg/500 µg protein lysate. <b>Immunohistochemistry on Frozen and Formalin-Fixed Paraffin Sections:</b> 0.5-1.0 µg/ml for 30 minutes at RT. Staining of formalin-fixed tissues requires boiling tissue sections in 10mM Citrate Buffer, pH 6.0, for 10-20 min followed by cooling at RT for 20 minutes. <b>Positive Control:</b> Spent medium of MCF-7 cells, treated with estrogen. Normal stomach. About 60% of breast carcinomas are positive for pS2, especially those that are also positive for estrogen and/or progesterone receptor.
Reactivity:	Human, Monkey
Host:	Mouse
Isotype:	IgG1
Clonality:	Monoclonal
Immunogen:	Synthetic peptide of 28 amino acid residues corresponding to (amino acids 57-84) from the C-terminus of Human pS2.
Specificity:	It recognizes a polypeptide of 6.5kDa, identified as pS2 estrogen-regulated protein. Its epitope is localized between aa57-84 of Human pS2 protein. <b>Cellular Localization:</b> Cytoplasmic.
Formulation:	10mM PBS State: Purified State: Liquid purified IgG fraction from Bioreactor Concentrate Stabilizer: 0.05% BSA Preservative: 0.05% Sodium Azide
Concentration:	lot specific



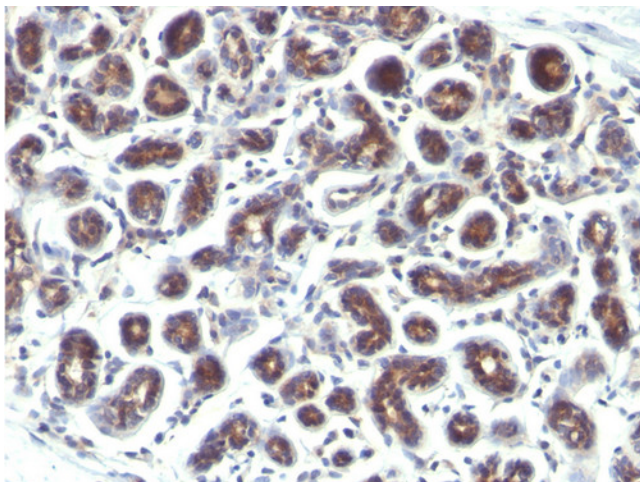
[View online »](#)

<b>Purification:</b>	Protein A/G Chromatography
<b>Conjugation:</b>	Unconjugated
<b>Storage:</b>	Store undiluted at 2-8°C.
<b>Stability:</b>	Shelf life: one year from despatch.
<b>Predicted Protein Size:</b>	6.5 kDa
<b>Gene Name:</b>	trefoil factor 1
<b>Database Link:</b>	<a href="#">Entrez Gene 7031 Human P04155</a>

**Background:** Trefoil peptides are protease resistant molecules secreted throughout the gut that play a role in mucosal healing. These peptides contain three intrachain disulfide bonds, forming the trefoil motif, or P-domain. pS2 is known to form dimers and this dimerization is thought to play a role in its protective and healing properties. About 60% of breast carcinomas are positive for pS2. Staining is cytoplasmic, often with localization to the Golgi apparatus. pS2 is shown to be localized in normal stomach mucosa, gastric fluid, goblet cells in the colon and small intestine, and in ulcerations of the gastrointestinal tract. Several studies have shown that pS2 is primarily expressed in estrogen receptor-positive breast tumors and it may define a subset of estrogen-dependent tumors that displays an increased likelihood of response to endocrine therapy.

**Synonyms:** TFF1, BCEI, Breast cancer estrogen-inducible protein, PNR-2

### Product images:



Formalin-Fixed, Paraffin-Embedded human breast Ca stained with Trefoil factor 1 / pS2 Antibody Clone GE2.