

Product datasheet for **AM33283PU-S**

Plasma Cell Mouse Monoclonal Antibody [Clone ID: SPM310]

Product data:

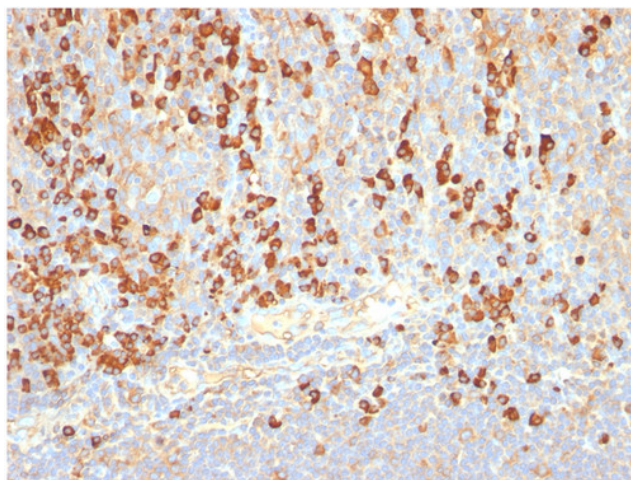
Product Type:	Primary Antibodies
Clone Name:	SPM310
Applications:	IHC
Recommended Dilution:	<p>Immunohistochemistry on Paraffin Sections: Use Plasma Cell antibody at 0.5-1 µg/ml for 30 minutes at RT.</p> <p>Staining of formalin-fixed tissues requires boiling tissue sections in 10mM citrate buffer, pH 6.0, for 10-20 min followed by cooling at RT for 20 minutes.</p> <p>Positive Control: Tonsil or Lymph node.</p> <p>Note that this Monoclonal Antibody is not suitable for staining Frozen tissues.</p>
Reactivity:	Human
Host:	Mouse
Isotype:	IgG2a
Clonality:	Monoclonal
Immunogen:	Pancreatic cancer related Mucin.
Specificity:	<p>This antibody recognizes an intracytoplasmic antigen which shows a very high degree of specificity for plasma cells. This antigen is present in normal as well as neoplastic plasma cells.</p> <p>Plasma cells, which are large lymphocytes derived from an antigen- specific B cell, secrete antibodies and are responsible for humoral immunity. Plasma cells differentiate from B cells upon stimulation by CD4 + lymphocytes. The B cell acts as an antigen-presenting cell (APC), consuming an offending pathogen, which is taken up by the B cell by phagocytosis and broken down within proteosomes. Plasma cells contain basophilic cytoplasm; their nucleus contains heterochromatin organized in a characteristic cartwheel arrangement. This Plasma Cell Marker antibody superbly recognizes normal and neoplastic plasma cells in routine formalin-fixed, paraffin-embedded tissue sections. It is of potential value in identifying myeloma or plasmacytoma in bone marrow or other tissues. It also helps differentiate lympho- plasmacytoid lymphoma from lymphocytic and follicular lymphoma.</p> <p>Cellular Localization: Cytoplasmic.</p> <p>Negative Species: Rat.</p>



[View online »](#)

Formulation:	10mM PBS State: Purified State: Liquid purified IgG fraction from Bioreactor Concentrate Stabilizer: 0.05% BSA Preservative: 0.05% Sodium Azide
Concentration:	lot specific
Purification:	Protein A/G Chromatography
Conjugation:	Unconjugated
Storage:	Store undiluted at 2-8°C.
Stability:	Shelf life: one year from despatch.
Background:	Plasma cells (also called plasma B cells or plasmocytes), which are large lymphocytes derived from an antigen-specific B cell, secrete antibodies and are responsible for humoral immunity. Plasma cells differentiate from B cells upon stimulation by CD4+ lymphocytes. The B cell acts as an antigen-presenting cell (APC), consuming an offending pathogen, which is taken up by the B cell by phagocytosis and broken down within proteosomes. Plasma cells contain basophilic cytoplasm; their nucleus contains heterochromatin organized in a characteristic cartwheel arrangement.
Synonyms:	Plasma B cell, Plasmocytes

Product images:



Formalin-paraffin human tonsil stained with Plasma Cell Marker MAb (Clone SPM310).