

Product datasheet for **AM33281PU-S**

Biotin Mouse Monoclonal Antibody [Clone ID: SPM375]

Product data:

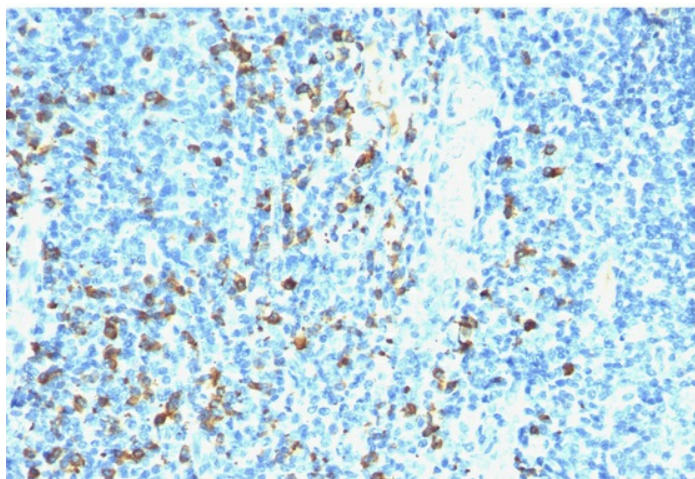
Product Type:	Primary Antibodies
Clone Name:	SPM375
Applications:	ELISA, FC, IF, IHC, ISH, WB
Recommended Dilution:	<p>ELISA.</p> <p>Western Blotting.</p> <p>Confocal Microscopy.</p> <p>Flow Cytometry: 0.5-1 µg/10⁶ cells.</p> <p>In situ Nucleic Acid Hybridization.</p> <p>Immunofluorescence: 0.5-1 µg/ml.</p> <p>Immunohistochemistry on Frozen and Formalin-Fixed Sections: 0.5-1 µg/ml for 30 minutes at RT.</p> <p>No special pretreatment is required for the immunohistochemical staining of formalin-fixed, paraffin-embedded tissues.</p> <p>Recommended Positive Control: Biotinylated proteins in solution or on tissues.</p>
Reactivity:	All Species
Host:	Mouse
Isotype:	IgG1
Clonality:	Monoclonal
Immunogen:	Biotinylated Sheep immunoglobulin.
Specificity:	<p>It recognizes both the free and protein-conjugated (either soluble or cell bound) form of Biotin.</p> <p>This Monoclonal Antibody is highly specific to Biotin and shows no cross-reaction with other structurally related compounds. It has a very high affinity for Biotin and is excellent for use in various amplification techniques. In some applications, localization of biotinylated probes with avidin produces unacceptably high background staining. Anti-Biotin antibody may be substituted to decrease this noise.</p> <p>Cellular Localization: Depends on the target.</p>



[View online »](#)

Formulation:	10mM PBS
	State: Purified
	State: Liquid purified IgG fraction from Bioreactor Concentrate
	Stabilizer: 0.05% BSA
	Preservative: 0.05% Sodium Azide
Concentration:	lot specific
Purification:	Protein A/G Chromatography
Conjugation:	Unconjugated
Storage:	Store undiluted at 2-8°C.
	DO NOT FREEZE!
Stability:	Shelf life: one year from despatch.
Predicted Protein Size:	244 kDa
Synonyms:	Vitamin B7, Vitamin H

Product images:



Formalin-Paraffin tonsil stained with Biotinylated Lambda Light Chain probe followed by Biotin Antibody AM33281PU (Clone SPM375). Note cell membrane & cytoplasmic staining.