

Product datasheet for **AM33278PU-T**

TAG72 Mouse Monoclonal Antibody [Clone ID: SPM148]

Product data:

Product Type:	Primary Antibodies
Clone Name:	SPM148
Applications:	FC, IF, IHC, IP, WB
Recommended Dilution:	ELISA: Use Antibody without BSA for coating. Western Blot: 0.5-1 µg/ml. Flow Cytometry: 0.5-1 µg/10 ⁶ cells. Immunoprecipitation: 1-2 µg/500 µg protein lysate. Immunofluorescence: 1-2 µg/ml. Immunohistochemistry on Frozen and Formalin-Fixed Paraffin Sections: 0.5-1 µg/ml for 30 minutes at RT. No pretreatment is required for staining of formalin-fixed, paraffin-embedded tissues. Positive Control: Jurkat cells, Breast or lung carcinoma.
Reactivity:	Bovine, Canine, Hamster, Human, Rat
Host:	Mouse
Isotype:	IgG1
Clonality:	Monoclonal
Immunogen:	Membrane-enriched fraction of a Human breast carcinoma liver metastasis.
Specificity:	This antibody recognizes an oncofetal antigen of 220kDa, identified as a tumor-associated glycoprotein (TAG-72) with properties of a mucin. This Monoclonal antibody defines the mucin-carried sialylated-Tn epitope. TAG-72 is usually expressed by adenocarcinomas, but is negative in mesotheliomas. Studies have reported that this antibody has 80% sensitivity and 93% specificity for pulmonary adenocarcinoma. Therefore, TAG-72 is a useful marker to distinguish between mesothelioma and adenocarcinoma. However, false positive reactions can occur so results must be interpreted with the utmost caution. This antibody may be useful in the differentiation of non-small cell carcinomas from small cell carcinomas of the lung. The combined use of anti-TAG-72 and anti-GCDFP-15 is valuable in the diagnosis of apocrine carcinoma. Cellular Localization: Cell surface and cytoplasmic.



[View online »](#)

Formulation: 10mM PBS
State: Purified
State: Liquid purified IgG fraction from Bioreactor Concentrate
Stabilizer: 0.05% BSA
Preservative: 0.05% Sodium Azide

Concentration: lot specific

Purification: Protein A/G Chromatography

Conjugation: Unconjugated

Storage: Store undiluted at 2-8°C.

DO NOT FREEZE!

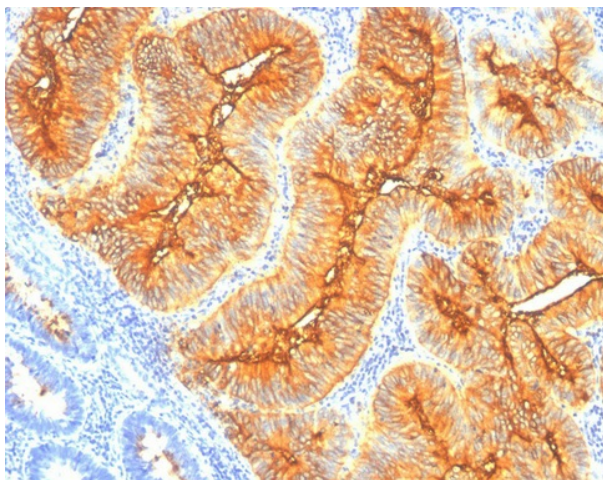
Stability: Shelf life: one year from despatch.

Predicted Protein Size: 220 kDa

Background: Tumor-associated glycoprotein (TAG) 72 is a tumor marker, identified and characterized using two different monoclonal antibodies B72.3 and CC49. It is a mucin-like protein of high molecular weight (220-400 kd). The protein is expressed in several epithelial-derived cancers including 94% of colonic adenocarcinomas, 84% of invasive ductal carcinomas of the breast, 96% of non-small cell lung carcinomas, 100% of common epithelial ovarian carcinomas, as well as the majority of pancreatic, gastric, and esophageal cancers evaluated. The protein expression is also detected in fetal colon, stomach, and esophagus, thus defining TAG-72 as an oncofetal antigen.

Synonyms: CA 72-4, CA72-4, sialy-Tn, Tumor-Associated Glycoprotein 72

Product images:



Formalin-Fixed, Paraffin-Embedded colon cancer stained with TAG72 Antibody Cat.-No AM33278PU (Clone SPM148). Note cytoplasmic and cell surface staining.