

Product datasheet for **AM33276PU-S**

CEACAM5 Mouse Monoclonal Antibody [Clone ID: SPM548]

Product data:

| | |
|-----------------------|---|
| Product Type: | Primary Antibodies |
| Clone Name: | SPM548 |
| Applications: | FC, IF, IHC, IP, WB |
| Recommended Dilution: | ELISA: Use Antibody without BSA for Coating. Western Blot: 0.25-0.5 µg/ml. Flow Cytometry: 0.5-1 µg/10 ⁶ cells. Immunofluorescence: 1-2 µg/ml. Immunoprecipitation: 1-2 µg/500 µg protein. Immunohistochemistry on Frozen and Formalin-Fixed Paraffin Sections: 1-2 µg/ml for 30 min at RT. Staining of formalin-fixed tissues requires boiling tissue sections in 10mM Tris Buffer, pH 8.5-9.0, for 10-20 min followed by cooling at RT for 20 minutes. Positive Control: MCF7 or 293T cells, Colon Carcinoma. |
| Reactivity: | Human, Monkey |
| Host: | Mouse |
| Isotype: | IgG1 |
| Clonality: | Monoclonal |
| Immunogen: | Human Colon carcinoma cell extract. |
| Specificity: | This antibody recognizes proteins of 80-200kDa, identified as different members of CEA family. CEA is synthesized during development in the fetal gut and is re-expressed in increased amounts in intestinal carcinomas and several other tumors. This Monoclonal antibody does not react with nonspecific cross-reacting antigen (NCA) and with human polymorphonuclear leucocytes. It shows no reaction with a variety of normal tissues and is suitable for staining of formalin/paraffin tissues. CEA is not found in benign glands, stroma, or malignant prostatic cells. Antibody to CEA is useful in detecting early foci of gastric carcinoma and in distinguishing pulmonary adenocarcinomas (60-70% are CEA+) from pleural mesotheliomas (rarely or weakly CEA+). Anti-CEA positivity is seen in adenocarcinomas from the lung, colon, stomach, esophagus, pancreas, gallbladder, urachus, salivary gland, ovary, and endocervix. Cellular Localization: Cytoplasmic and luminal membrane. |



[View online »](#)

Formulation: 10mM PBS
State: Purified
State: Liquid purified IgG fraction from Bioreactor Concentrate
Stabilizer: 0.05% BSA
Preservative: 0.05% Sodium Azide

Concentration: lot specific

Purification: Protein A/G Chromatography

Conjugation: Unconjugated

Storage: Store undiluted at 2-8°C.

Stability: Shelf life: one year from despatch.

Predicted Protein Size: 80-200 kDa

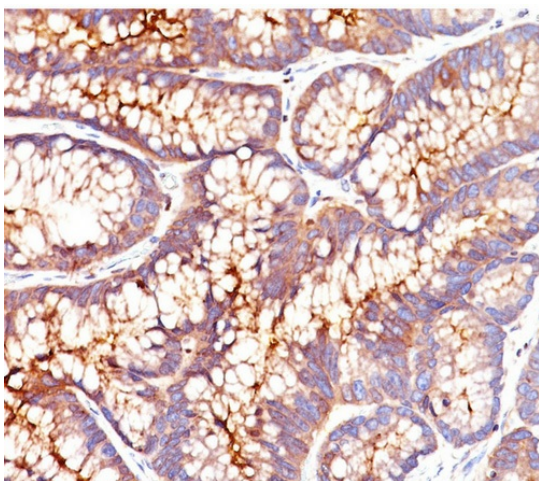
Gene Name: carcinoembryonic antigen related cell adhesion molecule 5

Database Link: [Entrez Gene 1048 Human P06731](#)

Background: Human carcinoembryonic antigen (CEA) belongs to a family of membrane glycoproteins that are overexpressed in many carcinomas. CEA may function as a cell adhesion molecule, which could play an important role during embryogenesis and possibly also during tumor development. Despite its presence in some normal tissues, its concentration in serum is a clinically useful parameter, especially in the postoperative monitoring of colonic tumor patients.

Synonyms: CEA, Carcinoembryonic antigen

Product images:



Formalin-Fixed, Paraffin-Embedded Human colon stained with CEA Antibody (Clone SPM541).