

Product datasheet for **AM33271PU-T**

acidic Cytokeratin Mouse Monoclonal Antibody [Clone ID: SPM115]

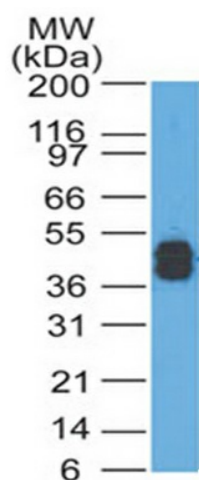
Product data:

Product Type:	Primary Antibodies
Clone Name:	SPM115
Applications:	FC, IF, IHC, WB
Recommended Dilution:	ELISA: Use BSA free Antibody for coating. Western Blot: 0.5-1 µg/ml. Flow Cytometry: 0.5-1 µg/10 ⁶ cells. Immunofluorescence: 1-2 µg/ml. Immunohistochemistry on Frozen and Formalin-Fixed Paraffin Sections: 0.5-1 µg/ml for 30 minutes at RT. Staining of formalin-fixed tissues requires boiling tissue sections in 10mM citrate buffer, pH 6.0, for 10-20 min followed by cooling at RT for 20 minutes. Positive Control: Skin, Squamous Cell Carcinoma (SCC).
Reactivity:	Bovine, Canine, Chicken, Human, Monkey, Mouse, Rabbit, Rat
Host:	Mouse
Isotype:	IgG1
Clonality:	Monoclonal
Immunogen:	Human epidermal keratin.
Specificity:	This Monoclonal Antibody (Clone SPM115) recognizes the 56.5kDa (CK10); 50kDa (CK14); 50kDa (CK15); 48kDa (CK16); 40kDa (CK19) keratins of the acidic (Type I or LMW) subfamily. Twenty human keratins are resolved with two-dimensional gel electrophoresis into acidic (pI < 5.7) and basic (pI > 6.0) subfamilies. The acidic keratins have molecular weights (MW) of 56.5, 55, 51, 50, 50', 48, 46, 45, and 40kDa. This SPM116 recognizes the 65-67, 64, 59, 58, 56, and 52kDa keratins of basic subfamily. Many studies have shown the usefulness of keratins as markers in cancer research and tumor diagnosis. Cellular Localization: Cytoplasmic.

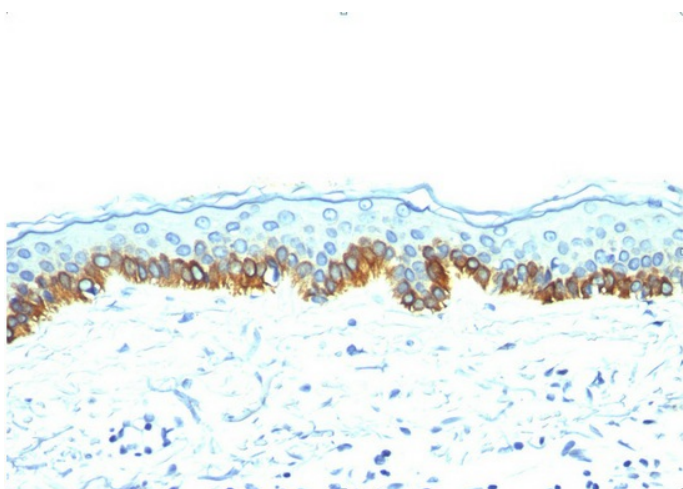


[View online »](#)

Formulation:	10mM PBS State: Purified State: Liquid purified IgG fraction from Bioreactor Concentrate Stabilizer: 0.05% BSA Preservative: 0.05% Sodium Azide
Concentration:	lot specific
Purification:	Protein A/G Chromatography
Conjugation:	Unconjugated
Storage:	Store undiluted at 2-8°C.
Stability:	Shelf life: one year from despatch.
Predicted Protein Size:	56.5 kDa (CK10); 50 kDa (CK14); 50 kDa (CK15); 48 kDa (CK16); 40 kDa (CK19)
Background:	Cytokeratins are intermediate filament keratins found in the intracytoplasmic cytoskeleton of epithelial tissue There are two types of Cytokeratins: the low weight, acidic type I cytokeratins and the high weight, basic or neutral type II. Cytokeratins are usually found in pairs comprising a type I Cytokeratin and a type II cytokeratin. The high molecular weight cytokeratins, which are the basic or neutral cytokeratins, comprise subtypes CK1, CK2, CK3, CK4, CK5, CK6, CK7, CK8 and CK9. The low molecular weight cytokeratins, which are the acidic cytokeratins, comprise subtypes CK10, CK12, CK 13, CK14, CK16, CK17, CK18, CK19 and CK20.
Synonyms:	Cytokeratin type I, Keratin type I, LMW Cytokeratins

Product images:


Western blot analysis of A431 lysate using acidic Cytokeratin Antibody Cat.-No AM33271PU (Clone SPM115).



Formalin-Fixed, Paraffin-Embedded Human skin stained with acidic Cytokeratin Antibody Cat.-No AM33271PU (Clone SPM115).