

Product datasheet for **AM33270PU-S**

pan Cytokeratin Mouse Monoclonal Antibody [Clone ID: SPM115 + SPM116]

Product data:

Product Type: Primary Antibodies

Clone Name: SPM115 + SPM116

Applications: FC, IF, IHC, WB

Recommended Dilution: **Western Blot:** 0.5-1 µg/ml.

Flow Cytometry: 0.5-1 µg/10⁶ cells.

Immunofluorescence: 1-2 µg/ml.

Immunohistochemistry on Formalin-Fixed Paraffin Sections: 0.5-1 µg/ml for 30 minutes at RT.

Staining of formalin-fixed tissues requires boiling tissue sections in 10mM citrate buffer, pH 6.0, for 10-20 min followed by cooling at RT for 20 minutes.

Positive Control: Skin, Adeno- or Squamous carcinomas.

Reactivity: Bovine, Canine, Chicken, Human, Monkey, Mouse, Rabbit, Rat

Host: Mouse

Isotype: IgG1

Clonality: Monoclonal

Immunogen: Human epidermal keratin.

Specificity: Twenty Human keratins are resolved with two-dimensional gel electrophoresis into acidic (pI < 5.7) and basic (pI > 6.0) subfamilies. This antibody cocktail recognizes acidic (Type I or LMW) and basic (Type II or HMW) cytokeratins, which include CK1, CK3, CK4, CK5, CK6, CK8, CK10, CK14, CK15, CK16, and CK19. Many studies have shown the usefulness of keratins as markers in cancer research and tumor diagnosis.

This Monoclonal Antibody is a broad spectrum anti pan-Cytokeratin antibody cocktail, which differentiates epithelial tumors from non-epithelial tumors e.g. squamous vs. adenocarcinoma of the lung, liver carcinoma, breast cancer, and esophageal cancer. It has been used to characterize the source of various neoplasms and to study the distribution of cytokeratin containing cells in epithelia during normal development and during the development of epithelial neoplasms.

This antibody stains Cytokeratins present in normal and abnormal human tissues and has shown high sensitivity in the recognition of epithelial cells and carcinomas.

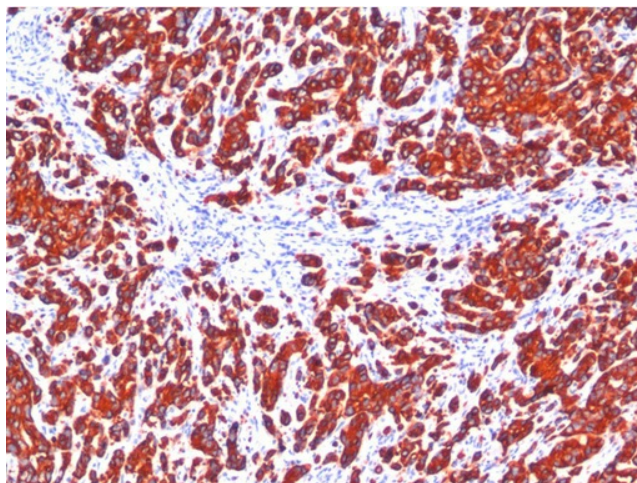
Cellular Localization: Cytoplasmic.



[View online »](#)

Formulation:	10mM PBS State: Purified State: Liquid purified IgG fraction from Bioreactor Concentrate Stabilizer: 0.05% BSA Preservative: 0.05% Sodium Azide
Concentration:	lot specific
Purification:	Protein A/G Chromatography
Conjugation:	Unconjugated
Storage:	Store undiluted at 2-8°C.
Stability:	Shelf life: one year from despatch.
Background:	Cytokeratins are intermediate filament keratins found in the intracytoplasmic cytoskeleton of epithelial tissue. There are two types of Cytokeratins: the low weight, acidic type I cytokeratins and the high weight, basic or neutral type II. Cytokeratins are usually found in pairs comprising a type I Cytokeratin and a type II cytokeratin. The high molecular weight cytokeratins, which are the basic or neutral cytokeratins, comprise subtypes CK1(67), CK2(65.5), CK3(64), CK4(59), CK5(58), CK6(56), CK7(54), CK8(52.5) and CK9. The low molecular weight cytokeratins, which are the acidic cytokeratins, comprise subtypes CK10 (56.5), CK12 (56), CK13 (53), CK14 (50), CK16 (48), CK17 (46), CK18 (45), CK19 (48) and CK20 (46).
Synonyms:	Cytokeratin pan-reactive, pan Keratin

Product images:



Formalin-Fixed, Paraffin-Embedded Breast carcinoma stained with pan Cytokeratin Antibody cocktail Cat.-No AM33270PU (Clone SPM115+SPM116).