

## Product datasheet for **AM33243RP-N**

### **EPCAM Mouse Monoclonal Antibody [Clone ID: VU-1D9]**

#### **Product data:**

Product Type:	Primary Antibodies
Clone Name:	VU-1D9
Applications:	FC
Recommended Dilution:	<b>Flow Cytometry (Cell Surface):</b> Use antibody at 5 µl/test/10 <sup>6</sup> cells (0.2 µg).
Reactivity:	Human
Host:	Mouse
Isotype:	IgG1
Clonality:	Monoclonal
Immunogen:	Small cell lung carcinoma cells.
Specificity:	<p>This antibody is specific for CD326, also known as Ep-CAM. EGP40 is a 40-43kDa transmembrane epithelial glycoprotein, also identified as epithelial specific antigen (ESA), or epithelial cellular adhesion molecule (Ep-CAM). It is expressed on baso-lateral cell surface in most simple epithelia and a vast majority of carcinomas. This antibody has been used to distinguish adenocarcinoma from pleural mesothelioma and hepatocellular carcinoma. This antibody is also useful in distinguishing serous carcinomas of the ovary from mesothelioma.</p> <p><b>Cellular Localization:</b> Cell surface.</p> <p><b>Negative Species:</b> Rat.</p>
Formulation:	<p>10mM PBS Label: PE State: Liquid purified IgG fraction from Bioreactor Concentrate Stabilizer: 0.05% BSA Preservative: 0.05% Sodium Azide</p>
Concentration:	lot specific
Purification:	Protein A/G Chromatography
Conjugation:	PE
Storage:	<p>Store undiluted at 2-8°C. <b>DO NOT FREEZE!</b> This products is photosensitive and should be protected from light.</p>



[View online »](#)

**Stability:** Shelf life: one year from despatch.

**Predicted Protein Size:** 40-43 kDa

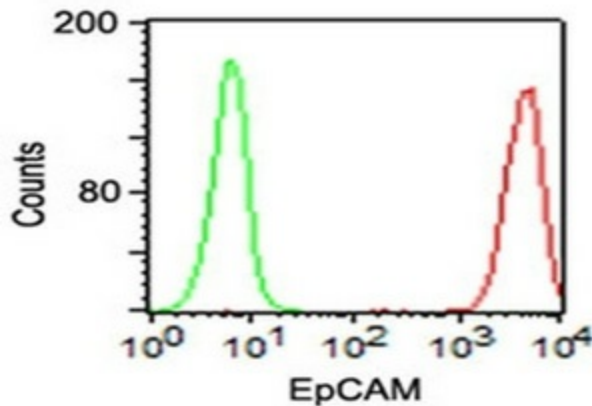
**Gene Name:** epithelial cell adhesion molecule

**Database Link:** [Entrez Gene 4072 Human P16422](#)

**Background:** Epithelial Cell Adhesion Molecule (Ep-CAM), a 38kD cell surface antigen otherwise known as CD326, MOC31 and Ber-EP4. CD326 is a type 1 transmembrane glycoprotein. It is expressed on the basolateral cell membrane of the majority of epithelial tissues, with the exception of adult squamous epithelium, hepatocytes and gastric epithelial cells. Ep-CAM expression has been reported to be a possible marker of early malignancy, with expression being increased in tumour cells.

**Synonyms:** Ep-CAM, Epithelial cell adhesion molecule, GA733-2, EGP314, KSA, TROP1, Trop-1, M1S2, M4S1, MIC18

### Product images:



Surface staining of HT29 cells using Ep-CAM Antibody (Clone VU-1D9) (red) and isotype control antibody (green).