

Product datasheet for **AM33243PU-T**

EPCAM Mouse Monoclonal Antibody [Clone ID: VU-1D9]

Product data:

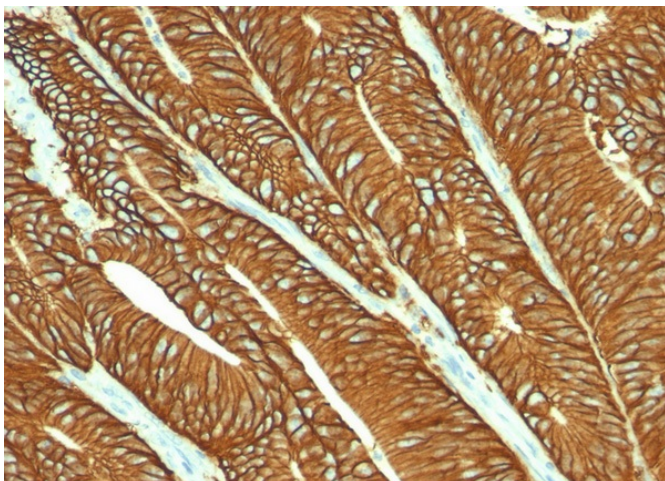
| | |
|-----------------------|--|
| Product Type: | Primary Antibodies |
| Clone Name: | VU-1D9 |
| Applications: | FC, IF, IHC, IP, WB |
| Recommended Dilution: | ELISA: Use BSA free Antibody for Coating. Western Blot: 0.5-1 µg/ml. Detects a band of approximately 38kDa in HT-29 cell lysates. Immunoprecipitation: 0.5-1 µg/500 µg protein lysate. Flow Cytometry: 0.5-1 µg/10 ⁶ cells. Immunofluorescence: 1-2 µg/ml. Immunohistochemistry on Frozen and Formalin-Fixed Paraffin Sections: 0.5-1 µg/ml for 30 minutes at RT. Staining of formalin/paraffin tissues REQUIRES digestion of tissue sections with pepsin at 1 mg/ml Tris-HCl, pH 2.0 for 15 min at RT or 10 min at 37°C Positive Control: HT29 cells or breast tumor. |
| Reactivity: | Human |
| Host: | Mouse |
| Isotype: | IgG1 |
| Clonality: | Monoclonal |
| Immunogen: | Small cell lung carcinoma cells. |
| Specificity: | This antibody is specific for CD326, also known as Ep-CAM. EGP40 is a 40-43kDa transmembrane epithelial glycoprotein, also identified as epithelial specific antigen (ESA), or epithelial cellular adhesion molecule (Ep-CAM). It is expressed on baso-lateral cell surface in most simple epithelia and a vast majority of carcinomas. This antibody has been used to distinguish adenocarcinoma from pleural mesothelioma and hepatocellular carcinoma. This antibody is also useful in distinguishing serous carcinomas of the ovary from mesothelioma. Cellular Localization: Cell surface. Negative Species: Rat. |



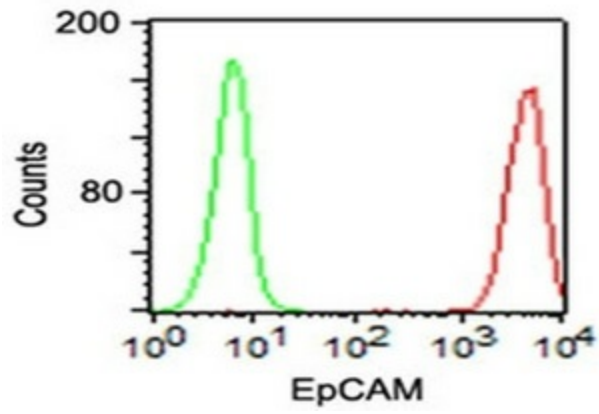
[View online »](#)

| | |
|--------------------------------|---|
| Formulation: | 10mM PBS State: Purified State: Liquid purified IgG fraction from Bioreactor Concentrate Stabilizer: 0.05% BSA Preservative: 0.05% Sodium Azide |
| Concentration: | lot specific |
| Purification: | Affinity Chromatography on Protein A/G |
| Conjugation: | Unconjugated |
| Storage: | Store undiluted at 2-8°C. |
| Stability: | Shelf life: one year from despatch. |
| Predicted Protein Size: | 40-43 kDa |
| Gene Name: | epithelial cell adhesion molecule |
| Database Link: | Entrez Gene 4072 Human P16422 |
| Background: | Epithelial Cell Adhesion Molecule (Ep-CAM), a 38kD cell surface antigen otherwise known as CD326, MOC31 and Ber-EP4. CD326 is a type 1 transmembrane glycoprotein. It is expressed on the basolateral cell membrane of the majority of epithelial tissues, with the exception of adult squamous epithelium, hepatocytes and gastric epithelial cells. Ep-CAM expression has been reported to be a possible marker of early malignancy, with expression being increased in tumour cells. |
| Synonyms: | Ep-CAM, Epithelial cell adhesion molecule, GA733-2, EGP314, KSA, TROP1, Trop-1, M1S2, M4S1, MIC18 |

Product images:



Formalin-Fixed, Paraffin-Embedded Human colon carcinoma tissue stained with EpCAM Antibody (Clone VU-1D9).



Surface staining of HT29 cells using Ep-CAM Antibody (Clone VU-1D9) (red) and isotype control antibody (green).