

Product datasheet for **AM33241PU-T**

Melanoma gp100 (PMEL) (PMEL17 / SILV) Mouse Monoclonal Antibody [Clone ID: HMB45]

Product data:

Product Type: Primary Antibodies

Clone Name: HMB45

Applications: FC, IF, IHC

Recommended Dilution: **ELISA:** Use BSA free Antibody for coating.
Flow Cytometry: 0.5-1 µg/million cells in 0.1ml.
Immunofluorescence: 0.5-1 µg/ml.
Immunohistochemistry on Formalin-Fixed Sections: 0.5-1.0 µg/ml for 30 minutes at RT.
Staining of formalin-fixed tissues requires boiling tissue sections in 10mM citrate buffer, pH 6.0, for 10-20 min followed by cooling at RT for 20 minutes.
Positive Control: SK-MEL-28 cells or Melanoma.

Reactivity: Human

Host: Mouse

Isotype: IgG1

Clonality: Monoclonal

Immunogen: Extract of pigmented melanoma metastases from lymph nodes.

Specificity: By Immunohistochemistry, it specifically recognizes a protein in melanocytes and melanomas.

This Monoclonal Antibody reacts with junctional and blue nevus cells and variably with fetal and neonatal melanocytes. Intradermal nevi, normal adult melanocytes, and non-melanocytic cells are negative. It does not stain tumor cells of epithelial, lymphoid, glial, or mesenchymal origin. Metastatic amelanotic melanoma can often be confused with a variety of poorly differentiated carcinomas, large cell lymphomas, and sarcomas using H & E stains alone. It is also difficult to differentiate melanoma from spindle cell carcinomas and various types of mesenchymal neoplasms. Anti-HMB-45 stains fetal and neonatal melanocytes, junctional and blue nevus cells, and malignant melanoma. This Monoclonal Antibody also stains Angiomyolipoma (PEComa).

Cellular Localization: Cytoplasmic.

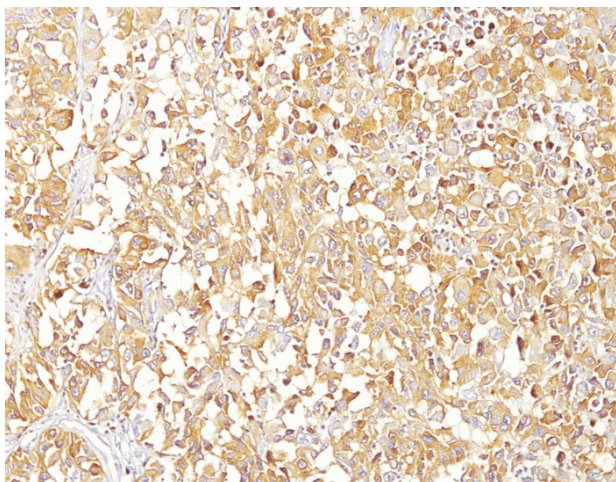
Negative Species: Dog and Rat.



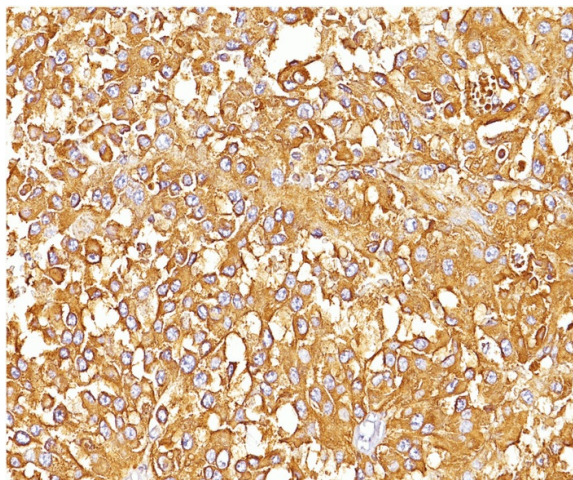
[View online »](#)

| | |
|--------------------------------|---|
| Formulation: | 10mM PBS State: Purified State: Liquid purified IgG fraction from Bioreactor Concentrate Stabilizer: 0.05% BSA Preservative: 0.05% Sodium Azide |
| Concentration: | lot specific |
| Purification: | Protein A or G Chromatography |
| Conjugation: | Unconjugated |
| Storage: | Store undiluted at 2-8°C. |
| Stability: | Shelf life: one year from despatch. |
| Predicted Protein Size: | 90-100 kDa |
| Gene Name: | premelanosome protein |
| Database Link: | Entrez Gene 6490 Human P40967 |
| Synonyms: | SILV, D12S53E, PMEL17, ME20-M |
| Note: | Hu-chromosome location: 12q13.2 Theoretical MW: 95 kDa. Disclaimer note: The observed molecular weight of the protein may vary from the listed predicted molecular weight due to post translational modifications, post translation cleavages, relative charges, and other experimental factors. |

Product images:



Formalin-Fixed, Paraffin-Embedded Human Melanoma (10X) stained with gp100 / Melanosome Antibody (Clone HMB45).



Formalin-Fixed, Paraffin-Embedded Human Melanoma (20X) stained with gp100 / Melanosome Antibody (Clone HMB45).