

Product datasheet for **AM33241PU-S**

Melanoma gp100 (PMEL) (PMEL17 / SILV) Mouse Monoclonal Antibody [Clone ID: HMB45]

Product data:

Product Type: Primary Antibodies

Clone Name: HMB45

Applications: FC, IF, IHC

Recommended Dilution: **ELISA:** Use BSA free Antibody for coating.
Flow Cytometry: 0.5-1 µg/million cells in 0.1ml.
Immunofluorescence: 0.5-1 µg/ml.
Immunohistochemistry on Formalin-Fixed Sections: 0.5-1.0 µg/ml for 30 minutes at RT.
Staining of formalin-fixed tissues requires boiling tissue sections in 10mM citrate buffer, pH 6.0, for 10-20 min followed by cooling at RT for 20 minutes.
Positive Control: SK-MEL-28 cells or Melanoma.

Reactivity: Human

Host: Mouse

Isotype: IgG1

Clonality: Monoclonal

Immunogen: Extract of pigmented melanoma metastases from lymph nodes.

Specificity: By Immunohistochemistry, it specifically recognizes a protein in melanocytes and melanomas.

This Monoclonal Antibody reacts with junctional and blue nevus cells and variably with fetal and neonatal melanocytes. Intradermal nevi, normal adult melanocytes, and non-melanocytic cells are negative. It does not stain tumor cells of epithelial, lymphoid, glial, or mesenchymal origin. Metastatic amelanotic melanoma can often be confused with a variety of poorly differentiated carcinomas, large cell lymphomas, and sarcomas using H & E stains alone. It is also difficult to differentiate melanoma from spindle cell carcinomas and various types of mesenchymal neoplasms. Anti-HMB-45 stains fetal and neonatal melanocytes, junctional and blue nevus cells, and malignant melanoma. This Monoclonal Antibody also stains Angiomyolipoma (PEComa).

Cellular Localization: Cytoplasmic.

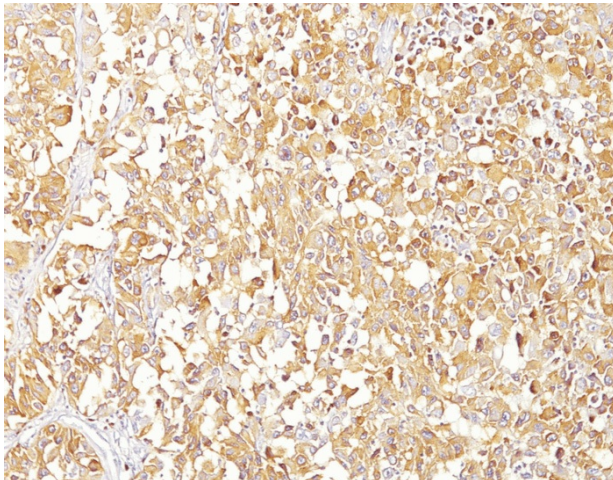
Negative Species: Dog and Rat.



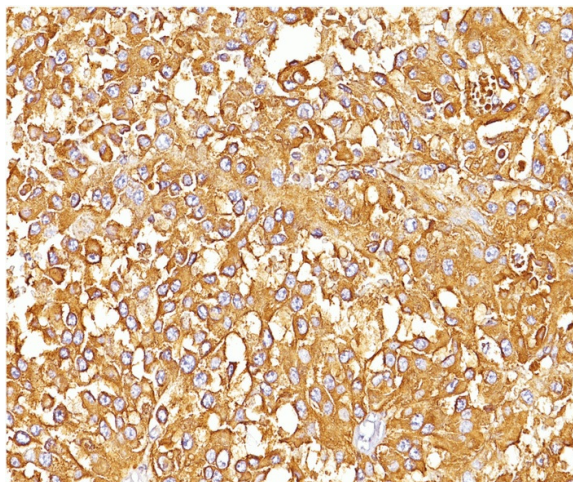
[View online »](#)

Formulation:	10mM PBS State: Purified State: Liquid purified IgG fraction from Bioreactor Concentrate Stabilizer: 0.05% BSA Preservative: 0.05% Sodium Azide
Concentration:	lot specific
Purification:	Protein A or G Chromatography
Conjugation:	Unconjugated
Storage:	Store undiluted at 2-8°C.
Stability:	Shelf life: one year from despatch.
Predicted Protein Size:	90-100 kDa
Gene Name:	premelanosome protein
Database Link:	Entrez Gene 6490 Human P40967
Synonyms:	SILV, D12S53E, PMEL17, ME20-M
Note:	Hu-chromosome location: 12q13.2 Theoretical MW: 95 kDa. Disclaimer note: The observed molecular weight of the protein may vary from the listed predicted molecular weight due to post translational modifications, post translation cleavages, relative charges, and other experimental factors.

Product images:



Formalin-Fixed, Paraffin-Embedded Human Melanoma (10X) stained with gp100 / Melanosome Antibody (Clone HMB45).



Formalin-Fixed, Paraffin-Embedded Human Melanoma (20X) stained with gp100 / Melanosome Antibody (Clone HMB45).