

## Product datasheet for **AM33172PU-N**

### PAI1 (SERPINE1) Mouse Monoclonal Antibody [Clone ID: 1D5]

#### Product data:

Product Type:	Primary Antibodies
Clone Name:	1D5
Applications:	ELISA, FC, IHC, WB
Recommended Dilution:	<b>ELISA:</b> 1/10000. <b>Western Blot:</b> 1/500-1/2000. <b>Flow Cytometry:</b> 1/200-1/400. <b>Immunohistochemistry on Paraffin Sections:</b> 1/200-1/1000.
Reactivity:	Human
Host:	Mouse
Isotype:	IgG1
Clonality:	Monoclonal
Immunogen:	Purified recombinant fragment of Human SERPINE1 expressed in <i>E. Coli</i> .
Specificity:	This antibody recognizes Human SERPINE1 / PAI-1. Other species not tested.
Formulation:	PBS State: Purified State: Liquid purified Ig fraction Stabilizer: 0.5% BSA Preservative: 0.05% Sodium Azide
Concentration:	lot specific
Conjugation:	Unconjugated
Storage:	Store undiluted at 2-8°C for one month or (in aliquots) at -20°C for longer. Avoid repeated freezing and thawing.
Stability:	Shelf life: one year from despatch.
Predicted Protein Size:	45 kDa
Gene Name:	serpin family E member 1
Database Link:	<a href="#">Entrez Gene 5054 Human P05121</a>



[View online »](#)

**Background:**

This gene encodes a member of the serine proteinase inhibitor (serpin) superfamily. This member is the principal inhibitor of tissue plasminogen activator (tPA) and urokinase (uPA), and hence is an inhibitor of fibrinolysis. Defects in this gene are the cause of plasminogen activator inhibitor-1 deficiency (PAI-1 deficiency), and high concentrations of the gene product are associated with thrombophilia. Alternatively spliced transcript variants encoding different isoforms have been found for this gene.

**Synonyms:**

Serpin E1, PLANH1, Plasminogen Activator Inhibitor 1, PAI-1, PAI

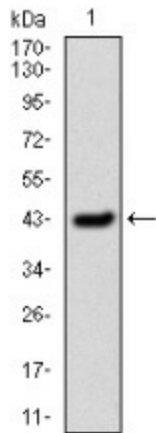
**Protein Families:**

Druggable Genome, Secreted Protein

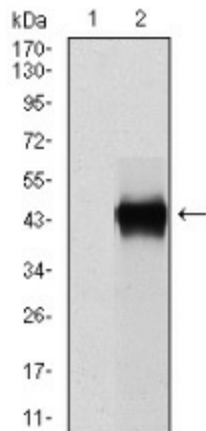
**Protein Pathways:**

Complement and coagulation cascades, p53 signaling pathway

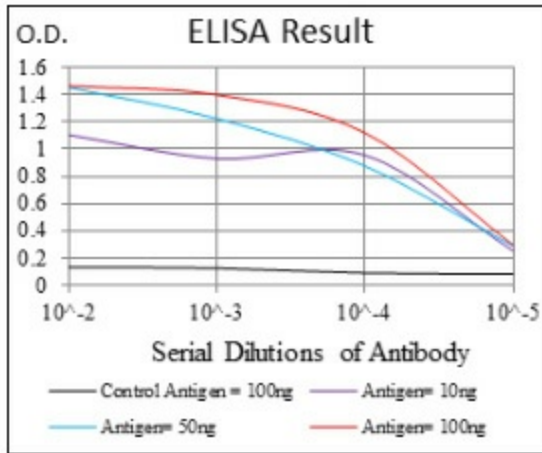
**Product images:**



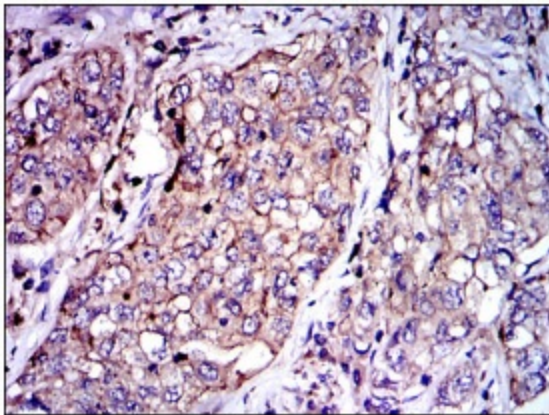
Western blot analysis using SERPINE1 Antibody (Clone 1D5) against Human SERPINE1 (AA: 194-316) recombinant protein. Expected MW is 45kDa kDa



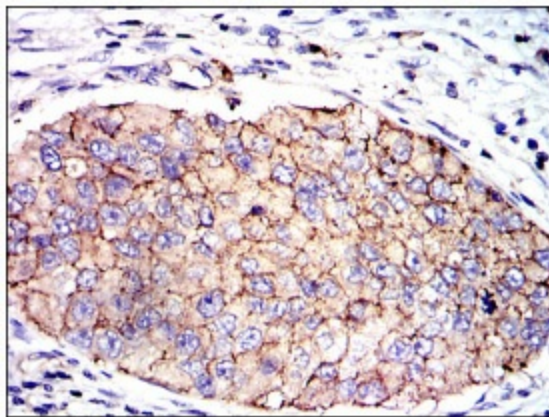
Western blot analysis using SERPINE1 Antibody (Clone 1D5) against HEK293 (1) and SERPINE1 (AA: 194-316)-hlgGFc transfected HEK293 (2) cell lysate.



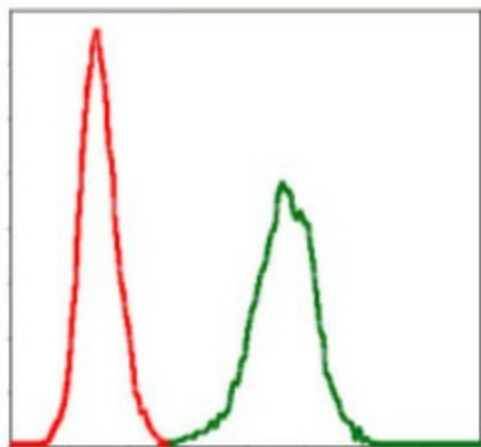
Red: Control Antigen (100ng); Purple: Antigen (10ng); Green: Antigen (50ng); Blue: Antigen (100ng);



Immunohistochemical analysis of paraffin-embedded lung cancer tissues using SERPINE1 Antibody (Clone 1D5) with DAB staining.



Immunohistochemical analysis of paraffin-embedded lung kidney tissues using SERPINE1 Antibody (Clone 1D5) with DAB staining.



Flow Cytometric analysis of NIH/3T3 cells using SERPINE1 Antibody (Clone 1D5) (green) and negative control (red).