

## Product datasheet for **AM33126PU-S**

### CA 19-9 Mouse Monoclonal Antibody [Clone ID: 121SLE]

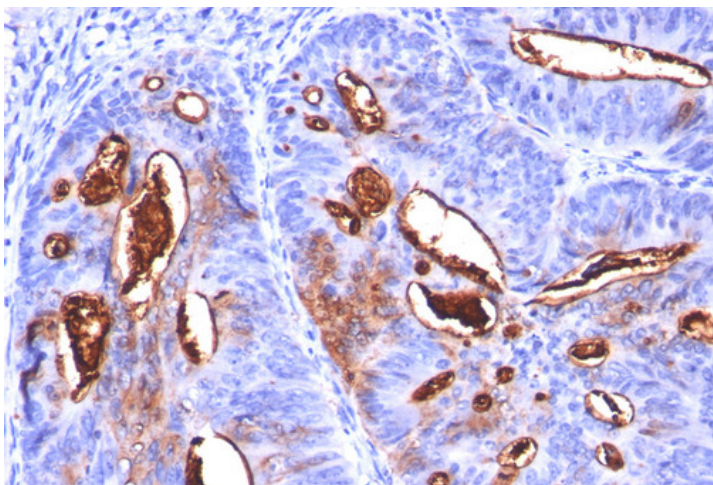
#### Product data:

Product Type:	Primary Antibodies
Clone Name:	121SLE
Applications:	FC, IF, IHC, WB
Recommended Dilution:	<b>ELISA:</b> Use BSA free Antibody for coating. <b>Western Blot:</b> 0.5-1.0 µg/ml. <b>Flow Cytometry:</b> 0.5-1.0 µg/10 <sup>6</sup> cells. <b>Immunofluorescence:</b> 0.5-1.0 µg/ml. <b>Immunohistochemistry on Formalin-Fixed Paraffin Sections:</b> 0.5-1.0 µg/ml for 30 minutes at RT. Staining of formalin-fixed tissues requires boiling tissue sections in 10mM Citrate Buffer, pH 6.0, for 10-20 min followed by cooling at RT for 20 minutes. <b>Positive Control:</b> Stomach or Colon Carcinoma.
Reactivity:	Human
Host:	Mouse
Isotype:	IgM
Clonality:	Monoclonal
Immunogen:	Precipitin lines obtained after immuno-diffusion using MAb 116-NS-19-9 and mucins isolated from an ovarian cyst of a Lewis A+B <sup>-</sup> patient (0Le).
Specificity:	This 121SLE antibody is specific to CA19-9, which can predict recurrence of disease prior to radiographic treatment. <b>Cellular Localization:</b> Cytoplasmic.
Formulation:	10mM PBS State: Purified State: Liquid purified IgG fraction from Bioreactor Concentrate Stabilizer: 0.05% BSA Preservative: 0.05% Sodium Azide
Concentration:	lot specific
Conjugation:	Unconjugated

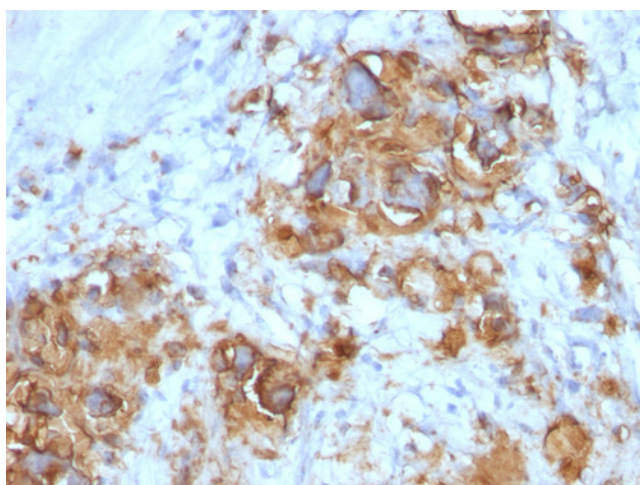


[View online »](#)

<b>Storage:</b>	Store undiluted at 2-8°C. <b>DO NOT FREEZE!</b>
<b>Stability:</b>	Shelf life: one year from despatch.
<b>Predicted Protein Size:</b>	> 400 kDa
<b>Background:</b>	CA19-9, a carbohydrate epitope expressed on a high MW (> 400kDa) mucin glycoprotein, is a sialyl Lewis <sup>a</sup> structure which is synthesized from type 1 blood group precursor chains and is present in individuals expressing the Lewis <sup>a</sup> and/or Lewis <sup>b</sup> blood group antigens. In normal tissues, sialyl Lewis <sup>a</sup> antigen is present in ductal epithelium of the breast, kidney, salivary gland, and sweat glands. Its expression is greatly enhanced in serum as well as in the majority of tumor cells in gastrointestinal (GI) carcinomas, including adenocarcinomas of the stomach, intestine, and pancreas. Preoperative elevated CA19-9 levels in patients with stage I pancreatic carcinoma decrease to normal values following surgery. When used serially, CA19-9 can predict recurrence of disease prior to radiographic or clinical findings.
<b>Synonyms:</b>	CA19-9, Sialosyl Lewis a, Sialyl Lewis a

**Product images:**

Formalin-Fixed, Paraffin-Embedded Human Colon Carcinoma stained with CA19-9 Antibody (Clone 121SLE).



Formalin-Fixed, Paraffin-Embedded Human Gastric Carcinoma stained with CA19-9 Antibody (Clone 121SLE).