

Product datasheet for **AM33118PU-S**

MUC2 Mouse Monoclonal Antibody [Clone ID: CCP58]

Product data:

Product Type:	Primary Antibodies
Clone Name:	CCP58
Applications:	ELISA, FC, IF, IHC, IP, WB
Recommended Dilution:	ELISA: Use Antibody without BSA For coating. Western blot: 0.5-1 µg/ml. Immunoprecipitation: 1-2 µg/500 µg protein lysate. Flow Cytometry: 0.5-1 µg/10 ⁶ cells. Immunofluorescence: 1-2 µg/ml. Immunohistochemistry on Frozen and Paraffin Sections: 0.5-1 µg/ml for 30 minutes at RT. Staining of formalin-fixed tissues requires boiling tissue sections in 10mM Tris-HCl buffer, pH 10.0, for 10-20 min followed by cooling at RT for 20 minutes. Positive Control: Colon cancer cell line LS174T, Small intestine.
Reactivity:	Human
Host:	Mouse
Isotype:	IgG1
Clonality:	Monoclonal
Immunogen:	A synthetic peptide of 29 amino acids, from Human MUC2 protein (MI-29) (VNTR region), coupled to KLH.
Specificity:	This Monoclonal <i>CCP58</i> antibody Recognizes a single glycoprotein of 520kDa, identified as mucin 2 (MUC2) and shows no cross-reaction with Human milk fat globule membranes, MUC1, or MUC3. Clone <i>CCP58</i> is reported to react with colon gastric cancer cells, normal intestine, colon and salivary gland (immunoperoxidase staining), Human colon cancer cell line by Flow Cytometry and Western blotting. The <i>CCP58</i> antibody is known to be specific to amino acids GTQTP (GlyThrGlnThrPro). Cellular Localization: Cytoplasmic and cell surface.



[View online »](#)

Formulation: 10mM PBS
State: Purified
State: Liquid purified IgG fraction
Stabilizer: 0.05% BSA
Preservative: 0.05% Sodium Azide

Concentration: lot specific

Purification: Protein A/G Chromatography

Conjugation: Unconjugated

Storage: Store undiluted at 2-8°C.

DO NOT FREEZE!

Stability: Shelf life: one year from despatch.

Predicted Protein Size: 520 kDa

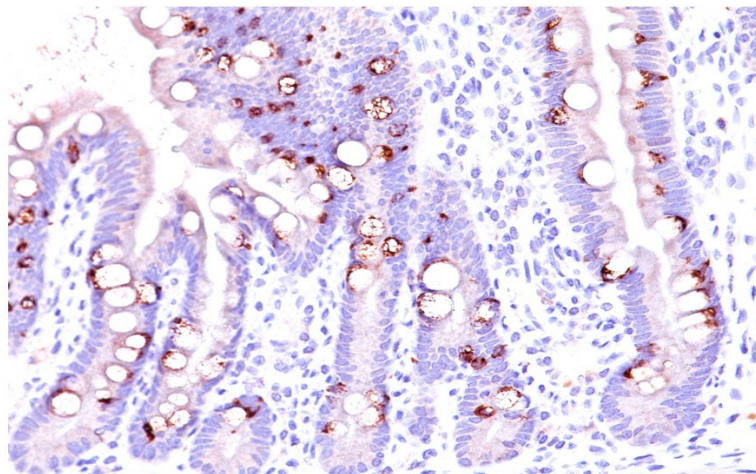
Gene Name: mucin 2, oligomeric mucus/gel-forming

Database Link: [Entrez Gene 4583 Human Q02817](#)

Background: This gene encodes a member of the mucin protein family. Mucins are high molecular weight glycoproteins produced by many epithelial tissues. The protein encoded by this gene is secreted and forms an insoluble mucous barrier that protects the gut lumen. The protein polymerizes into a gel of which 80% is composed of oligosaccharide side chains by weight. The protein features a central domain containing tandem repeats rich in threonine and proline that varies between 50 and 115 copies in different individuals. Alternatively spliced transcript variants of this gene have been described, but their full-length nature is not known.

Synonyms: MUC-2, MUC2, SMUC, Intestinal mucin-2

Product images:



Formalin-Fixed, Paraffin-Embedded normal Human intestine stained with Mucin-2 Antibody (Clone CCP58).