

Product datasheet for **AM33025PU-N**

T box 2 (TBX2) Mouse Monoclonal Antibody [Clone ID: 4D6]

Product data:

Product Type:	Primary Antibodies
Clone Name:	4D6
Applications:	IHC, IP, WB
Recommended Dilution:	Western blot. Immunoprecipitation. Immunohistochemistry on Paraffin Sections.
Reactivity:	Human
Host:	Mouse
Isotype:	IgG1
Clonality:	Monoclonal
Immunogen:	Derived by fusion of SP2/0 mouse myeloma cells with spleen cells from a BALB/c mouse immunized with a GST fusion protein corresponding to residues 554-702 of Human TBX2.
Formulation:	PBS State: Purified State: Liquid purified IgG fraction Preservative: 0.09% Sodium Azide
Concentration:	lot specific
Conjugation:	Unconjugated
Storage:	Store undiluted at 2-8°C for one month or (in aliquots) at -20°C for longer. Avoid repeated freezing and thawing.
Stability:	Shelf life: one year from despatch.
Predicted Protein Size:	75 kDa (Predicted)
Gene Name:	T-box 2
Database Link:	Entrez Gene 6909 Human Q13207



[View online »](#)

Background:

T-box transcription factor TBX2 is a protein that in humans is encoded by the TBX2 gene and with subcellular location in the nucleus.

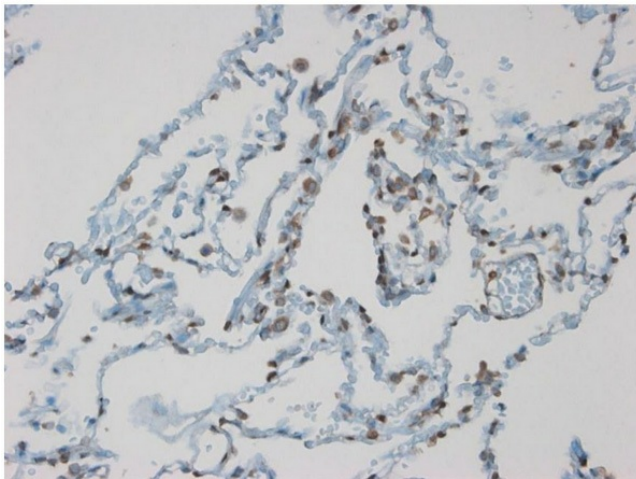
This gene is a member of a phylogenetically conserved family of genes that share a common DNA-binding domain, the T-box. T-box genes encode transcription factors involved in the regulation of developmental processes. This gene product is the human homolog of mouse Tbx2, and shares strong sequence similarity with Drosophila omb protein. Expression studies indicate that this gene may have a potential role in tumorigenesis as an immortalizing agent. Transcript heterogeneity due to alternative polyadenylation has been noted for this gene. In melanocytic cell types, expression of the T-box 2 gene is regulated by the Microphthalmia-associated transcription factor

The oncogene TBX2 is a cooperating factor in transformation of pocket protein deficient MEFs. TBX2 downregulates the p53/p21CIP1 pathway both in wild-type and pocket protein deficient MEFs.

Tissue specificity: expressed primarily in adult in kidney, lung, and placenta. Weak expression in heart and ovary.

Synonyms:

T-box protein 2

Product images:

Immunohistochemical analysis of Paraffin-Embedded Human lung tissue labelling Tbx2 with TBX2 Antibody Clone 4D6