

## Product datasheet for **AM33000PU-N**

### Actin (ACTA1) Mouse Monoclonal Antibody [Clone ID: 3B3]

#### Product data:

Product Type:	Primary Antibodies
Clone Name:	3B3
Applications:	ELISA, IHC, WB
Recommended Dilution:	<b>ELISA.</b> <b>Flow Cytometry.</b> <b>Immunoblotting.</b> <b>Immunohistochemistry on Frozen Sections.</b> <b>Immunohistochemistry on Paraffin-Embedded Sections.</b> <i>Recommended Dilutions:</i> 1/100-1/1000 for Immunohistochemistry with avidin-biotinylated horseradish peroxidase complex (ABC) as detection reagent and 1/1000-1/5000 for immunoblotting applications.
Reactivity:	Human, Porcine, Rabbit, Rat
Host:	Mouse
Isotype:	IgG1
Clonality:	Monoclonal
Immunogen:	Peptide comprising the N-terminal nonapeptide of $\alpha$ -skeletal Actin with an acetylated N-terminus coupled to keyhole limpet hemocyanin through the cysteine residue.
Specificity:	This 3B3 Monoclonal antibody is highly specific for Alpha-Skeletal Actin, and does not cross react with other Actin isoforms.
Formulation:	PBS State: Purified State: Liquid purified IgG fraction Preservative: 0.09% Sodium Azide
Concentration:	lot specific
Conjugation:	Unconjugated
Storage:	Store undiluted at 2-8°C. <b>DO NOT FREEZE!</b>
Stability:	Shelf life: one year from despatch.
Gene Name:	actin, alpha 1, skeletal muscle



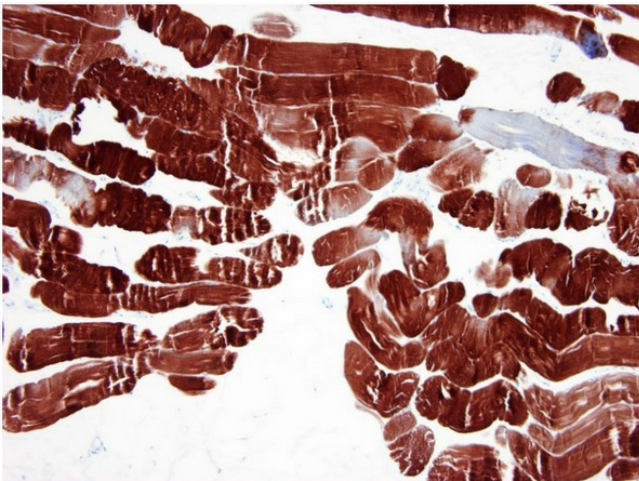
[View online »](#)

Database Link: [Entrez Gene 58 Human P68133](#)

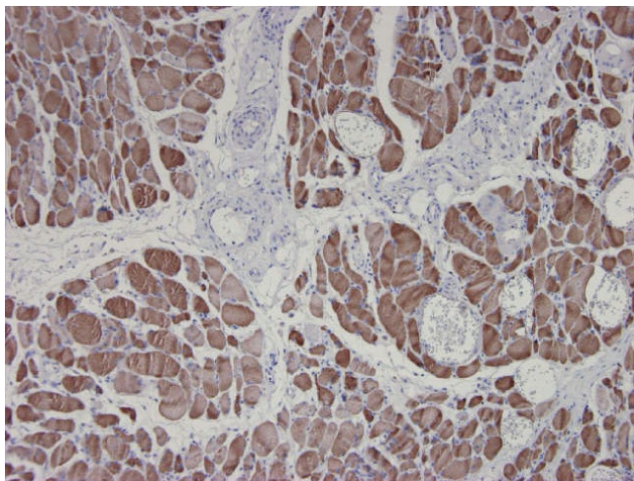
**Background:** Among the six actin isoforms described in mammals, two are found in virtually all cells ( $\beta$ - and  $\gamma$ -cytoplasmic), two are detected in smooth muscle cells ( $\alpha$ - and  $\gamma$ -smooth muscle) and two are present in striated muscles, one predominantly in skeletal ( $\alpha$ -skeletal) and one in cardiac ( $\alpha$ -cardiac) muscle cells. These actin isoforms differ slightly in their N-terminus, but the sequence of each of these actins is highly conserved in higher vertebrates. Skeletal  $\alpha$ -actin may also be expressed in the mammalian heart. Although during the late stage of fetal development  $\alpha$ -cardiac actin becomes the main isoform in the myocardium,  $\alpha$ -skeletal actin might still make up for almost half of its total striated muscle actin content.

**Synonyms:** ACTA; Alpha-actin-1; ASMA; CFTD; CFTD1; CFTDM; MPFD; NEM1; NEM2; NEM3

**Product images:**



Paraffin sections of human striated skeletal muscle from human tongue immunostained with 3B3 (1/250)



Paraffin sections of striated muscle from human tongue immunostained with 3B3 (1/250)