

Product datasheet for **AM32995PU-N**

LAMP1 Mouse Monoclonal Antibody [Clone ID: 5H6]

Product data:

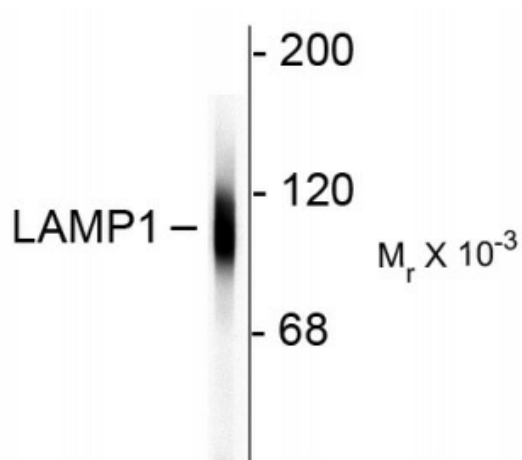
Product Type:	Primary Antibodies
Clone Name:	5H6
Applications:	IF, WB
Recommended Dilution:	Western Blot: 1/5000. Immunofluorescence: 1/2000.
Reactivity:	Human
Host:	Mouse
Isotype:	IgG1
Clonality:	Monoclonal
Immunogen:	Recombinant full length Human LAMP1 expressed in and purified from E. Coli.
Specificity:	Specific for the ~100k LAMP1 protein.
Formulation:	PBS State: Aff - Purified State: Liquid purified IgG fraction from Tissue Culture Supernatant Preservative: 10mM Sodium Azide
Purification:	Affinity Chromatography
Conjugation:	Unconjugated
Storage:	Upon receipt, store undiluted (in aliquots) at -20°C. Avoid repeated freezing and thawing.
Stability:	Shelf life: one year from despatch.
Gene Name:	lysosomal associated membrane protein 1
Database Link:	Entrez Gene 3916 Human P11279
Background:	Lysosomal Associated Membrane Protein1 (LAMP1) is a protein that is localized primarily in lysosomes but may also be present on late endosomes and the plasma membrane. LAMP1 antibodies are therefore widely used as lysosome markers. It has recently been suggested that lysosomes are activated in microglia in the progression of multiple system atrophy (MSA) and thus play a key role in its pathology (<i>Makioka et al., 2012</i>).



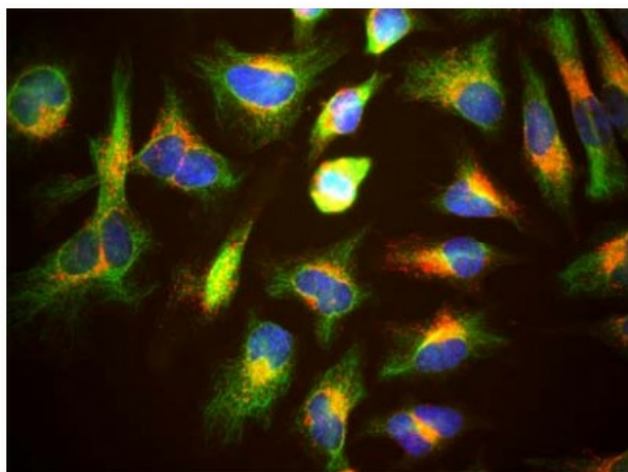
[View online »](#)

Synonyms: LAMP-1, LAMPA, LGP120

Product images:



Western blot of HeLa lysate showing specific immunolabeling of the ~ 100k LAMP1 protein.



Immunofluorescence of HeLa cells showing strong punctate cytoplasmic labeling of LAMP1 corresponding to lysosomes and late endosomes in red.