

Product datasheet for **AM32994PU-N**

Doublecortin (DCX) Mouse Monoclonal Antibody [Clone ID: 3E1]

Product data:

Product Type:	Primary Antibodies
Clone Name:	3E1
Applications:	IF, WB
Recommended Dilution:	Western Blot: 1/5000. Immunofluorescence: 1/1000.
Reactivity:	Bovine, Human, Mouse, Rat
Host:	Mouse
Isotype:	IgG2a
Clonality:	Monoclonal
Immunogen:	Full length recombinant Human Doublecortin expressed in and purified from E. coli.
Specificity:	Specific for the ~35 and 45 k Doublecortin protein.
Formulation:	PBS State: Aff - Purified State: Liquid purified IgG fraction from Tissue Culture Supernatant. Preservative: 10mM Sodium Azide
Purification:	Affinity Chromatography
Conjugation:	Unconjugated
Storage:	Upon receipt, store undiluted (in aliquots) at -20°C. Avoid repeated freezing and thawing.
Stability:	Shelf life: one year from despatch.
Gene Name:	doublecortin
Database Link:	Entrez Gene 1641 Human O43602



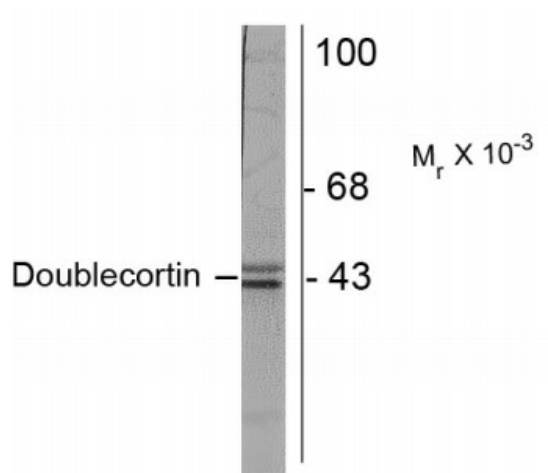
[View online »](#)

Background:

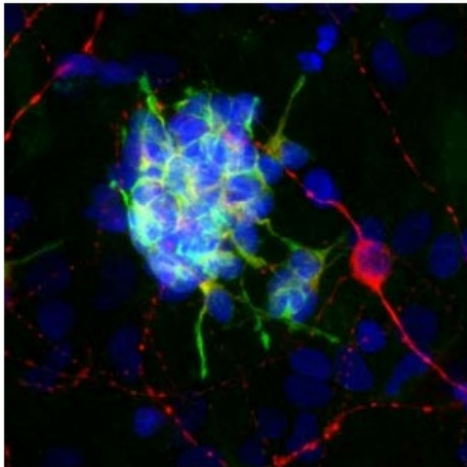
Doublecortin, or DCX, is a microtubule associated protein that is expressed almost exclusively in very early neuronal development (Brown et al., 2003), making it an excellent marker for developing neuronal cells. Defects in the DCX gene lead to X-linked lissencephaly which is characterized by a lack of normal folds on the surface of the brain resulting in a smooth cerebral cortex caused by abnormal migration of neurons during development (des Portes et al., 1998; Gleeson et al., 1998).

Synonyms:

Lissencephalin-X, Doublin, DCX, DBCN, LISX

Product images:


Western blot of postnatal day 3 Rat brain lysate showing specific immunolabeling of the ~35 & 45k Doublecortin protein.



Immunofluorescence of cultured rat neurons showing strong cytoplasmic staining of Doublecortin (green) in developing neurons and GFAP (Cat.-No [AP08674SU-N]) in red.