

## Product datasheet for **AM32972PU-N**

### prothymosin, alpha (PTMA) Mouse Monoclonal Antibody [Clone ID: 1F2]

#### Product data:

Product Type:	Primary Antibodies
Clone Name:	1F2
Applications:	ELISA, WB
Recommended Dilution:	<b>ELISA:</b> This antibody is reactive to recombinant PTMA protein. <b>Western blot:</b> This antibody is reactive to 38.4KDa GST tagged recombinant PTMA protein.
Reactivity:	Human
Host:	Mouse
Isotype:	IgG1
Clonality:	Monoclonal
Immunogen:	A short peptide (eeaengrdapangan) derived from PTMA was conjugated with KLH for immunization.
Specificity:	This antibody is reactive to PTMA peptide (eeaengrdapangan) and GST tagged recombinant PTMA protein.
Formulation:	0.01M PBS, pH 7.0 without preservatives State: Purified State: Lyophilized purified IgG fraction
Reconstitution Method:	Restore with Double distilled water to adjust the final concentration to 1.0 mg/ml.
Concentration:	1.0 mg/ml (after reconstitution)
Purification:	Affinity Chromatography on Protein G
Conjugation:	Unconjugated
Storage:	Prior to reconstitution store at 2-8°C. Following reconstitution store undiluted at 2-8°C for one month or (in aliquots) at -20°C for longer. Avoid repeated freezing and thawing.
Stability:	Shelf life: one year from despatch.
Gene Name:	prothymosin, alpha
Database Link:	<a href="#">Entrez Gene 5757 Human P06454</a>



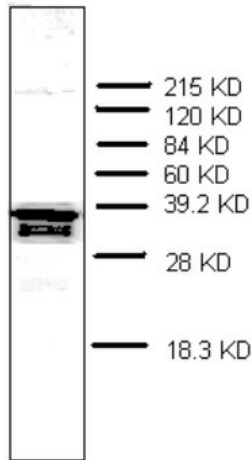
[View online »](#)

**Background:**

PTMA (prothymosin alpha) is the precursor of thymosin  $\alpha$ 1. It is an acidic, non-histone nuclear protein with 109-111 amino acids. PTMA is implicated with cell cycle regulation, chromatin remodeling, expression of oxidative stress-response genes and immunomodulation. PTMA is elevated in malignances such as breast cancer, gastric cancer, prostate and bladder cancers. PTMA is a potential biomarker for the prognosis of cancer treatment.

**Synonyms:**

PTMA, TMSA, Thymosin alpha-1

**Product images:**

The GST tagged recombinant PTMA was loaded at 200 ng/lane. The anti-PTMA clone 1F2 was used at 1  $\mu$ g/ml and the HRP conjugated goat anti-Mouse IgG was used at 1/2,000 dilution.