

## Product datasheet for **AM32965PU-N**

### Psoriasin (S100A7) Mouse Monoclonal Antibody [Clone ID: 1A10]

#### Product data:

Product Type:	Primary Antibodies
Clone Name:	1A10
Applications:	ELISA, WB
Recommended Dilution:	<b>ELISA:</b> This antibody is reactive to recombinant S100A7 protein. <b>Western blot:</b> This antibody is reactive to 36.85KDa GST tagged recombinant S100A7 protein.
Reactivity:	Human
Host:	Mouse
Isotype:	IgG1
Clonality:	Monoclonal
Immunogen:	A short peptide (tdyhkqshgaapcsggs) derived from Human S100A7 (Psoriasin) conjugated with KLH
Specificity:	This antibody is reactive to S100A7 peptide (tdyhkqshgaapcsggs) and GST tagged recombinant S100A7 protein.
Formulation:	0.01M PBS, pH 7.0 without preservatives State: Purified State: Lyophilized purified IgG fraction
Reconstitution Method:	Restore with Double distilled water to adjust the final concentration to 1.0 mg/ml.
Concentration:	1.0 mg/ml (after reconstitution)
Purification:	Affinity Chromatography on Protein G
Conjugation:	Unconjugated
Storage:	Prior to reconstitution store at 2-8°C. Following reconstitution store undiluted at 2-8°C for one month or (in aliquots) at -20°C for longer. Avoid repeated freezing and thawing.
Stability:	Shelf life: one year from despatch.
Gene Name:	S100 calcium binding protein A7
Database Link:	<a href="#">Entrez Gene 6278 Human P31151</a>

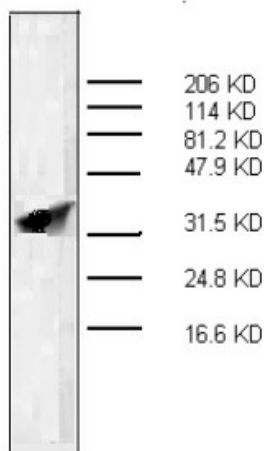


[View online »](#)

**Background:** S100A7 is 11 kilo-dalton calcium binding protein with 2 EF motifs. It is also called psoriasin due to its significantly elevated level in the skin lesion of psoriasis. The protein is over-expressed in squamous cell tumors of the skin, lung and breast. S100A7 expression is induced after activation of epidermal growth factor receptor.

**Synonyms:** S100-A7, S100A7C, PSOR1

**Product images:**



The GST tagged recombinant S100A7 was loaded at 200 ng/lane. The anti-S100A7 clone 1A10 was used at 1 ug/ml, and the HRP conjugated Goat anti-Mouse IgG was used at 1/2,000 dilution.