

## Product datasheet for **AM32959PU-N**

### FPRL1 (FPR2) (Extracell. Dom) Mouse Monoclonal Antibody [Clone ID: 3D7]

#### Product data:

Product Type:	Primary Antibodies
Clone Name:	3D7
Applications:	ELISA, WB
Recommended Dilution:	<b>ELISA:</b> In indirect ELISA, the antibody is reactive to the peptide (ASWGGTPEERLKC) from the 2 <sup>nd</sup> Extracellular loop of Human FPRL1. <b>Western Blot.</b>
Reactivity:	Human
Host:	Mouse
Isotype:	IgG1
Clonality:	Monoclonal
Immunogen:	A short peptide (ASWGGTPEERLKC) corresponding to the amino acids on the 2 <sup>nd</sup> extracellular loop of Human FPRL1
Specificity:	This antibody is reactive to the peptide (ASWGGTPEERLKC) from the 2 <sup>nd</sup> Extracellular loop of Human FPRL1 and is also reactive to intact Human FPRL1.
Formulation:	0.01M PBS, pH 7.2 without preservatives State: Purified State: Lyophilized purified IgG fraction
Reconstitution Method:	Restore with Double distilled water to adjust the final concentration to 1.0 mg/ml
Purification:	Affinity Chromatography on Protein G
Conjugation:	Unconjugated
Storage:	Upon receipt, store (in aliquots) at -20°C. Avoid repeated freezing and thawing.
Stability:	Shelf life: one year from despatch.
Gene Name:	formyl peptide receptor 2
Database Link:	<a href="#">Entrez Gene 2358 Human P25090</a>



[View online »](#)

**Background:**

FPRL1 is a low affinity receptor to N-formyl-methionyl peptides, which are powerful neutrophils chemotactic factors. Binding of FMLP to the receptor causes activation of neutrophils. This response is mediated via a G-protein that activates a phosphatidylinositol-calcium second messenger system. The activation of LXA4R could result in an anti-inflammatory outcome counteracting the actions of proinflammatory signals such as LTB4 (leukotriene B4). FPRL1 has been reported in phagocytes, monocytes, neutrophils, differentiated myeloid cells from bone marrow, granulocyte HL-60 cells, and synovial fibroblasts. ESTs have been isolated from blood, leukocyte, lung, and placenta libraries.

**Synonyms:**

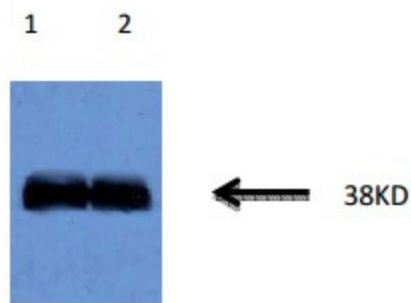
N-formyl peptide receptor 2, FMLP-R-I, FPRH1, RFP, LXA4R

**Protein Families:**

Druggable Genome, GPCR, Transmembrane

**Protein Pathways:**

Neuroactive ligand-receptor interaction

**Product images:**

1&2: FPRL1 /293 cells