

## Product datasheet for **AM32958PU-N**

### Cd46 Mouse Monoclonal Antibody [Clone ID: MM.1]

#### Product data:

Product Type:	Primary Antibodies
Clone Name:	MM.1
Applications:	ELISA, IF, IHC, WB
Recommended Dilution:	<b>Western blot:</b> Rat testis lysate, non-reducing conditions, band size 38 kDa (Ref.1,4). <b>Immuno Assays</b> (Ref.1). <b>Immunofluorescence</b> (Ref.2-4). <b>Immunohistochemistry on Frozen Sections</b> (Ref.1-3). The typical starting working dilution is 1/50.
Reactivity:	Rat
Host:	Mouse
Isotype:	IgG1
Clonality:	Monoclonal
Specificity:	The monoclonal antibody MM.1 recognizes CD46, also known as membrane cofactor protein.
Formulation:	PBS State: Purified State: Liquid 0.2 µm filtered Ig fraction Stabilizer: 0.1% BSA
Concentration:	lot specific
Conjugation:	Unconjugated
Storage:	Store undiluted at 2-8°C. <b>DO NOT FREEZE!</b>
Stability:	Shelf life: one year from despatch.
Gene Name:	CD46 molecule
Database Link:	<a href="#">Entrez Gene 29333 Rat Q9Z0M4</a>



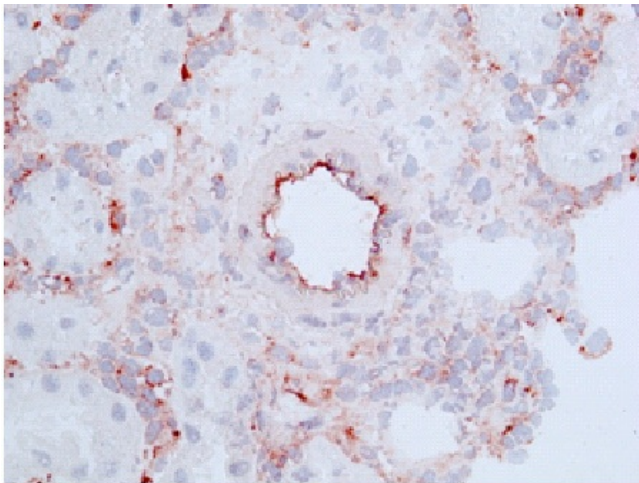
[View online »](#)

**Background:**

An immunohistological survey of rat tissues revealed that CD46 is expressed only in the testis and epididymis of adult rats more specifically, only by spermatozoa and late spermatozoal precursors. In contrast, in humans, CD46 is expressed on every cell and tissue, with the exception of erythrocytes. CD46 serves to down-regulate the activation of complement on host tissue. It functions as a cofactor by binding to C3b and C4b. Binding is permitted by factor I, a serine protease of plasma, to degrade C3b and C4b and serves to protect the host cell against autologous attack. In human, it also serves as a receptor for measles virus. Two isoforms of CD46 predominate and arise by alternative splicing of a single CD46 gene. The isoforms differ in the length. CD46 cDNA encodes a signal sequence followed by four complement control protein domains (also called short consensus repeats (SCR)).

**Synonyms:**

TLX, MIC10

**Product images:**

Immunohistochemical staining of Rat Kidney  
Frozen sections with CD46 antibody Clone MM.1