

Product datasheet for **AM32865PU-T**

TMEM16A (ANO1) Mouse Monoclonal Antibody [Clone ID: DG1/447]

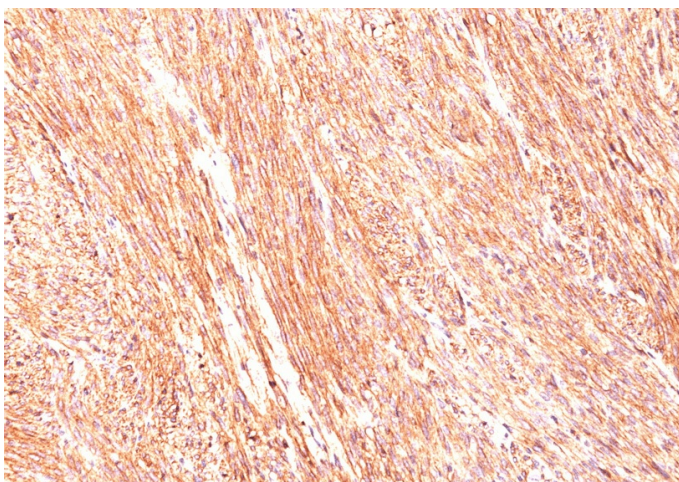
Product data:

| | |
|-----------------------|--|
| Product Type: | Primary Antibodies |
| Clone Name: | DG1/447 |
| Applications: | FC, IF, IHC, IP, WB |
| Recommended Dilution: | ELISA: Use Antibody without BSA for Coating. Flow Cytometry: 0.5-1 µg/10 ⁶ cells. Immunofluorescence: 0.5-1 µg/ml. Western Blot: 0.5-1 µg/ml. Immunoprecipitation: 0.5-1 µg/500 µg protein lysate. Immunohistochemistry on Frozen and Formalin-Fixed Paraffin Sections: 0.5-1 µg/ml for 30 minutes at RT. Staining of formalin-fixed tissues requires boiling tissue sections in 10mM Citrate Buffer, pH 6.0, for 10-20 min followed by cooling at RT for 20 minutes. Positive Control: Gastrointestinal Stromal Tumor (GIST) or testicular germ cell tumor. Melanocytes in the basal layer of the epidermis and mast cells in the dermis of normal skin. |
| Reactivity: | Human |
| Host: | Mouse |
| Isotype: | IgG1 |
| Clonality: | Monoclonal |
| Immunogen: | Recombinant human DOG-1 protein. |
| Specificity: | Expression of DOG-1 protein is elevated in the gastrointestinal stromal tumors (GIST's), c-kit signaling-driven mesenchymal tumors of the GI tract. DOG-1 is rarely expressed in other soft tissue tumors, which, due to appearance, may be difficult to diagnose. Immunoreactivity for DOG-1 has been reported in 97.8 percent of scorable GIST's, including all c-kit negative GIST's. Overexpression of DOG-1 has been suggested to aid in the identification of GISTs, including Platelet-Derived Growth Factor Receptor Alpha mutants that fail to express c-kit antigen. The overall sensitivity of DOG1 and c-kit in GIST's is nearly identical: 94.4% vs. 94.7%. Cellular Localization: Cell Surface and Cytoplasmic. |

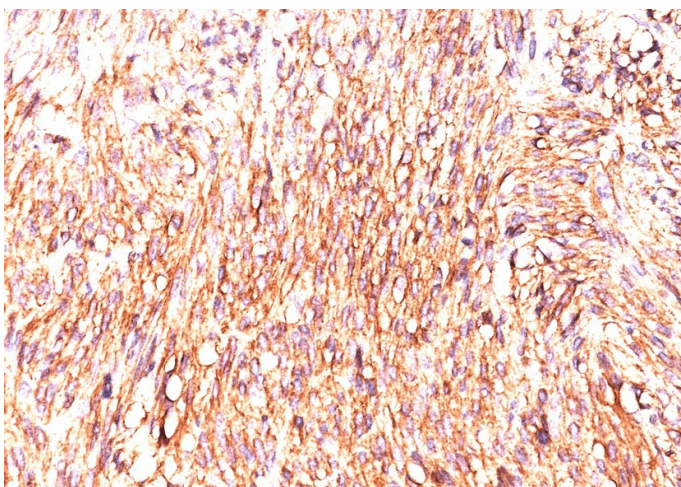


[View online »](#)

| | |
|-------------------------|---|
| Formulation: | 10mM PBS State: Purified State: Liquid purified IgG fraction from Bioreactor Concentrate Stabilizer: 0.05% BSA Preservative: 0.05% Sodium Azide |
| Concentration: | lot specific |
| Purification: | Protein A/G Chromatography |
| Conjugation: | Unconjugated |
| Storage: | Store undiluted at 2-8°C. |
| Stability: | Shelf life: one year from despatch. |
| Predicted Protein Size: | ~114 kDa |
| Gene Name: | anoctamin 1 |
| Database Link: | Entrez Gene 55107 Human Q5XXA6 |
| Synonyms: | Anoctamin-1, Transmembrane protein 16A, DOG-1, ORAOV2, TAOS2, TMEM16A |

Product images:

Formalin-Fixed, Paraffin-Embedded GIST (10X)
stained with DOG1 Antibody (Clone DG1/447).



Formalin-Fixed, Paraffin-Embedded GIST (20X)
stained with DOG1 Antibody (Clone DG1/447).