

Product datasheet for **AM32864PU-S**

Cyclin D1 (CCND1) Mouse Monoclonal Antibody [Clone ID: DCS-6]

Product data:

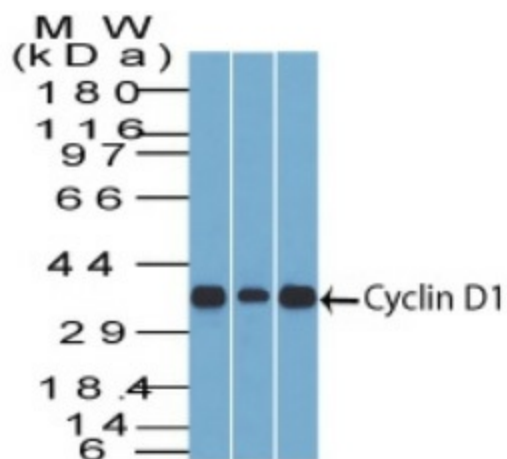
Product Type:	Primary Antibodies
Clone Name:	DCS-6
Applications:	FC, IF, IHC, IP, WB
Recommended Dilution:	ELISA and Biological Function Blockade: Use Antibody without BSA and Azide. Western Blot: 5-10 µg/ml. Immunohistochemistry on Frozen and Paraffin Sections: 0.5-1 µg/ml for 30 min at RT. Immunohistochemical staining of formalin/paraffin tissues is enhanced by unmasking of the target epitope by boiling the tissue sections in 10mM citrate buffer, pH 6.0, for 10 min followed by cooling at room temp for 20 min. Immunoprecipitation: 1-2 µg/500 µg protein lysate. Flow Cytometry: 0.5-1 µg/10 ⁶ cells. Immunofluorescence: 1-2 µg/ml. Positive Control: T47D, ZR75, BT474, SKBR3, MCF-7, MDA-MB-453, HT29, Ramos, Jurkat or A431 cells. ~60% of mantle cell lymphomas and ~40% of breast carcinomas are positive.
Reactivity:	Human, Monkey, Mouse, Rat
Host:	Mouse
Isotype:	IgG2a
Clonality:	Monoclonal
Immunogen:	Human recombinant full length Cyclin D1 protein.
Specificity:	Recognizes a protein of 36kDa, identified as Cyclin D1. Cyclin D1, one of the key cell cycle regulators, is a putative proto-oncogene overexpressed in a wide variety of Human neoplasms. This antibody neutralizes the activity of Cyclin D1 <i>in vivo</i> . About 60% of mantle cell lymphomas (MCL) contain a t(11; 14)(q13; q32) translocation resulting in over-expression of Cyclin D1. This antibody is useful in identifying mantle cell lymphomas (Cyclin D1 positive) from CLL/SLL and follicular lymphomas (Cyclin D1 negative). Occasionally, hairy cell leukemia and plasma cell myeloma weakly express Cyclin D1. Cellular Localization: Nuclear.



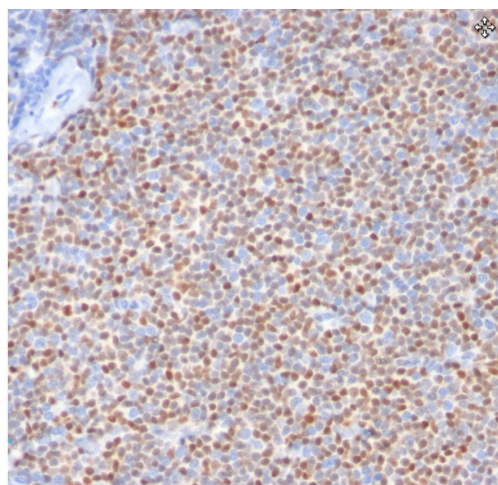
[View online »](#)

Formulation:	10mM PBS State: Purified State: Liquid purified IgG fraction from Bioreactor Concentrate Stabilizer: 0.05% BSA Preservative: 0.05% Sodium Azide
Concentration:	lot specific
Purification:	Protein A/G Chromatography
Conjugation:	Unconjugated
Storage:	Store undiluted at 2-8°C.
Stability:	Shelf life: one year from despatch.
Predicted Protein Size:	36 kDa
Gene Name:	cyclin D1
Database Link:	Entrez Gene 595 Human P24385
Background:	<p>Cyclin D1 is a member of a superfamily of cyclins, proteins that govern transitions through distinct phases of the cell cycle by regulating CDKs. The D-type subfamily includes cyclin D1, D2, and D3. All three are differentially, and sometimes redundantly, expressed in different lineages. However, in every cell type at least one of the three can be detected. Cyclin D1 as well as D2 and D3 have central roles in linking exogenous growth regulating stimuli with the cycling machinery of cells. They are typically considered to be G1 cyclins; synthesis is initiated during G1 and their expression drives the G1/S phase transition.</p> <p>The deregulation of cyclin D1 or other D types is commonly involved in a wide range of cancers. For example cyclin D1 is activated by chromosomal rearrangements in both parathyroid adenomas and B-cell neoplasms.</p>
Synonyms:	Cyclin-D1, PRAD-1 oncogene, BCL-1 oncogene, CCND1, BCL1, PRAD1

Product images:



Western blot analysis of Cyclin D1 in 1) C2C12, 2) HepG2, and 3) NIH3T3 lysate using Cyclin D1 Antibody (Clone DCS-6).



Formalin-Fixed, Paraffin-Embedded Human mantle cell lymphoma stained with Cyclin D1 Antibody (Clone DCS-6) using peroxidase-conjugate and DAB chromogen. Note nuclear staining of tumor cells.