

Product datasheet for **AM32834PU-S**

Bcl-2-like 1 (1-50) Mouse Monoclonal Antibody [Clone ID: BX006]

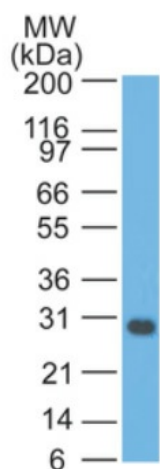
Product data:

Product Type:	Primary Antibodies
Clone Name:	BX006
Applications:	FC, IF, IHC, IP, WB
Recommended Dilution:	ELISA (For coating, use Antibody without BSA). Western Blot: 0.5-1 µg/ml. Flow Cytometry: 0.5-1 µg/10 ⁶ cells. Immunofluorescence: 1-2 µg/ml. Immunoprecipitation: 1-2 µg/500 µg protein lysate. Immunohistochemistry on Frozen and Formalin-Fixed Paraffin Sections: 0.5-1 mg/ml for 30 minutes at RT. Staining of formalin-fixed tissues requires boiling tissue sections in 1mM EDTA buffer, pH 7.5-8.5, for 10-20 min followed by cooling at RT for 20 minutes. Positive Control: K562, HL-60, or HeLa Cells. Reed-Sternberg cells in Hodgkin's lymphoma.
Reactivity:	Human, Mouse, Porcine, Rat
Host:	Mouse
Isotype:	IgG2a
Clonality:	Monoclonal
Immunogen:	A synthetic peptide corresponding to amino acids 1-50 of Human Bcl-X
Specificity:	The antibody recognizes a protein of 27 kDa identified as Bcl-X protein. It reacts with both Bcl-X _S and Bcl-X _L proteins. This Monoclonal antibody does not cross-react with Bcl-2 alpha or Bax protein. Bcl-X has two isoforms, Bcl-X _L (long), a 241 amino acid protein which suppresses cell death. And Bcl-X _S (short), a 178 amino acid protein lacking a 63 amino acid domain which functions as a dominant inhibitor of Bcl-2. Cellular Localization: Cytoplasmic and cell/nuclear membrane.
Formulation:	10mM PBS State: Purified State: Liquid purified IgG fraction from Bioreactor Concentrate Stabilizer: 0.05% BSA Preservative: 0.05% Sodium Azide

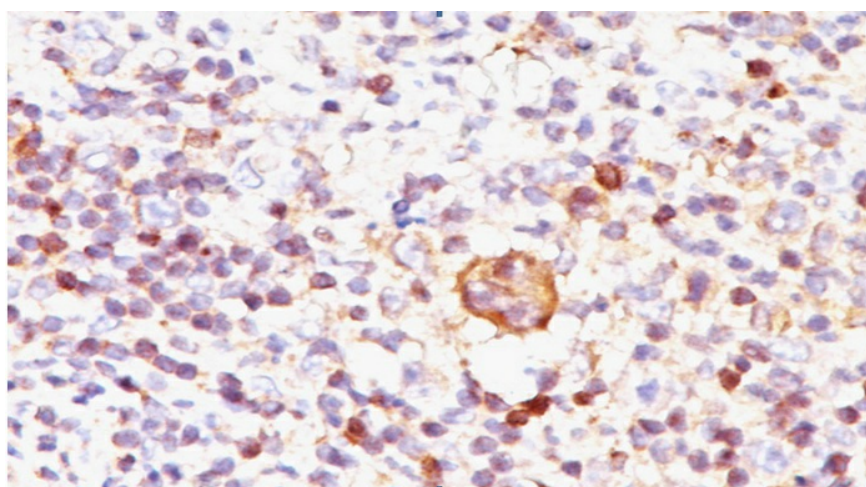


[View online »](#)

Concentration:	lot specific
Purification:	Protein A/G Chromatography
Conjugation:	Unconjugated
Storage:	Store undiluted at 2-8°C.
Stability:	Shelf life: one year from despatch.
Predicted Protein Size:	27 kDa
Gene Name:	BCL2 like 1
Database Link:	Entrez Gene 598 Human Q07817
Synonyms:	Bcl2-L-1, BCL2L1, BCL2L, BCLX, Bcl-x, bcl-xL, bcl-xS, Bcl-2-like protein 1

Product images:


Western blot analysis of Bcl-X in Jurkat lysate using Bcl-X Antibody Cat.-No AP32834PU (Clone BX006).



Formalin-Fixed, Paraffin-Embedded Hodgkin's lymphoma stained with Bcl-X Antibody Cat.-No AP32834PU (Clone BX006). Note cytoplasmic and membrane staining.