

Product datasheet for **AM32826PU-S**

Plasma Cell Mouse Monoclonal Antibody [Clone ID: LIV3G11]

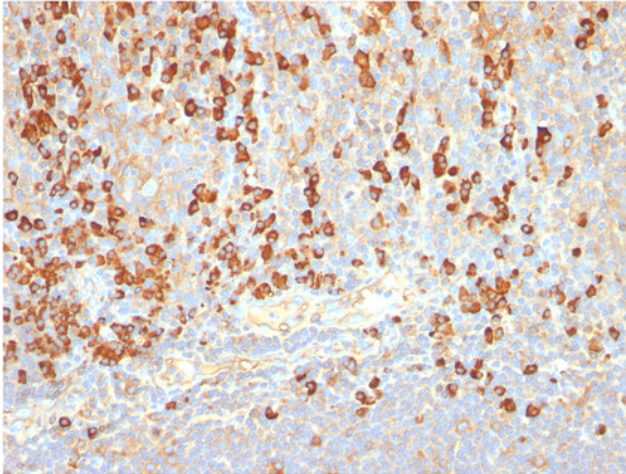
Product data:

Product Type:	Primary Antibodies
Clone Name:	LIV3G11
Applications:	IHC
Recommended Dilution:	Immunohistochemistry on Paraffin Sections: Use Plasma Cell antibody at 0.5-1 µg/ml for 30 minutes at RT. Staining of formalin-fixed tissues requires boiling tissue sections in 10mM citrate buffer, pH 6.0, for 10-20 min followed by cooling at RT for 20 minutes. Positive Control: Tonsil or Lymph node.
Reactivity:	Human
Host:	Mouse
Isotype:	IgG2a
Clonality:	Monoclonal
Immunogen:	Pancreatic cancer related serum Mucin.
Specificity:	LIV3G11 antibody recognizes an intracytoplasmic antigen which shows a very high degree of specificity for plasma cells. This antigen is present in normal as well as neoplastic plasma cells. This monoclonal antibody superbly recognizes normal and neoplastic plasma cells in routine formalin-fixed, paraffin-embedded tissue sections. Plasma Cell Marker antibody is of potential value in identifying myeloma or plasmacytoma in bone marrow or other tissues. It also helps differentiate lymphoplasmacytoid lymphoma from lymphocytic and follicular lymphoma. Note that this MAb is not suitable for staining frozen tissues. Cellular Localization: Cytoplasmic. Negative Species: Rat.
Formulation:	10mM PBS State: Purified State: Liquid purified IgG fraction from Bioreactor Concentrate Stabilizer: 0.05% BSA Preservative: 0.05% Sodium Azide
Concentration:	lot specific



[View online »](#)

Purification:	Protein A/G Chromatography
Conjugation:	Unconjugated
Storage:	Store undiluted at 2-8°C.
Stability:	Shelf life: one year from despatch.
Background:	Plasma cells (also called plasma B cells or plasmocytes), which are large lymphocytes derived from an antigen-specific B cell, secrete antibodies and are responsible for humoral immunity. Plasma cells differentiate from B cells upon stimulation by CD4+ lymphocytes. The B cell acts as an antigen-presenting cell (APC), consuming an offending pathogen, which is taken up by the B cell by phagocytosis and broken down within proteosomes. Plasma cells contain basophilic cytoplasm; their nucleus contains heterochromatin organized in a characteristic cartwheel arrangement.
Synonyms:	Plasma B cell, Plasmocytes
Note:	Clone LIV3G11 is the same as 7B18

Product images:

Formalin-paraffin human tonsil stained with Plasma Cell Marker MAb (Clone LIV3G11).