

Product datasheet for **AM32821PU-S**

EGFR Mouse Monoclonal Antibody [Clone ID: GFR450]

Product data:

Product Type:	Primary Antibodies
Clone Name:	GFR450
Applications:	FC, IF, IHC
Recommended Dilution:	Immunohistochemistry on Paraffin Sections: 0.5-1 µg/ml for 30 minutes at RT. Staining of formalin-fixed tissues requires boiling tissue sections in 10mM citrate buffer, pH 6.0, for 10-20 min followed by cooling at RT for 20 minutes. Positive Control: A431 cells, Breast or Bladder cancer. Flow Cytometry: 0.5-1 µg/million cells. Immunofluorescence: 1-2 µg/ml.
Reactivity:	Human
Host:	Mouse
Isotype:	IgG2a
Clonality:	Monoclonal
Immunogen:	Recombinant Human EGFR protein
Specificity:	This Monoclonal antibody <i>GFR450</i> recognizes a protein of 170kDa, identified as EGFR. Cellular Localization: Cell surface. Negative Species: Mouse.
Formulation:	10mM PBS State: Purified State: Liquid purified IgG fraction from Bioreactor Concentrate Stabilizer: 0.05% BSA Preservative: 0.05% Sodium Azide
Concentration:	lot specific
Purification:	Protein A/G Chromatography
Conjugation:	Unconjugated
Storage:	Store undiluted at 2-8°C.
Stability:	Shelf life: one year from despatch.
Predicted Protein Size:	~170 kDa (wild type) and ~145 kDa (vIII variant)



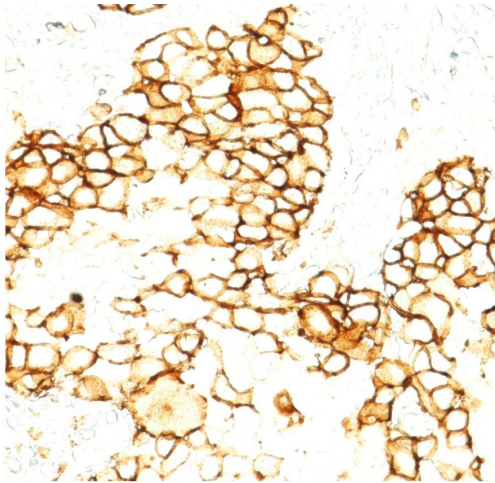
[View online »](#)

Database Link: [Entrez Gene 1956 Human P00533](#)

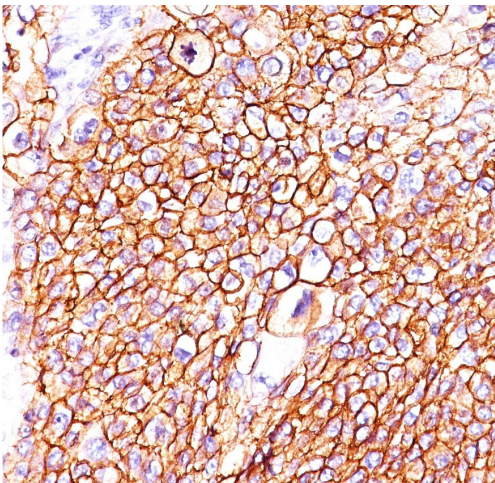
Background: EGFR is type I receptor tyrosine kinase with sequence homology to erbB-1, -2, -3 -4 or HER-1, -2, -3 -4. It binds to Epidermal Growth Factor (EGF), Transforming Growth Factor- α (TGF- α), Heparin-binding EGF (HB-EGF), amphiregulin, betacellulin and epiregulin. EGFR is overexpressed in tumors of breast, brain, bladder, lung, gastric, head & neck, esophagus, cervix, vulva, ovary, and endometrium. It is predominantly present in squamous cell carcinomas.

Synonyms: Epidermal growth factor receptor, EGF Receptor, erbB-1, c-ErbB-1

Product images:



Formalin-Fixed, Paraffin-Embedded Human breast tissue stained with EGFR Antibody (Clone GFR450).



Formalin-Fixed, Paraffin-Embedded Human squamous cell carcinoma stained with EGFR Antibody (Clone GFR450).