

Product datasheet for **AM32798PU-N**

EMA (MUC1) Mouse Monoclonal Antibody [Clone ID: 214D4]

Product data:

Product Type:	Primary Antibodies
Clone Name:	214D4
Applications:	FC, IHC
Recommended Dilution:	Flow Cytometry. Immunohistochemistry on Frozen Sections. Immunohistochemistry on Paraffin Sections (10 µg/ml).
Reactivity:	Human
Host:	Mouse
Isotype:	IgG1
Clonality:	Monoclonal
Immunogen:	Derived by fusion of SP2/0 mouse myeloma cells with spleen cells from a BALB/c Mouse immunized with a fusion protein, Human beta-Gal-Episialin/MUC1 repeat domain.
Specificity:	This Monoclonal <i>214D4</i> antibody is directed against the repeat domain of Episialin.
Formulation:	PBS State: Purified State: Liquid purified IgG fraction Preservative: 0.09% Sodium Azide
Concentration:	lot specific
Conjugation:	Unconjugated
Gene Name:	mucin 1, cell surface associated
Database Link:	Entrez Gene 4582 Human P15941



[View online »](#)

Background:

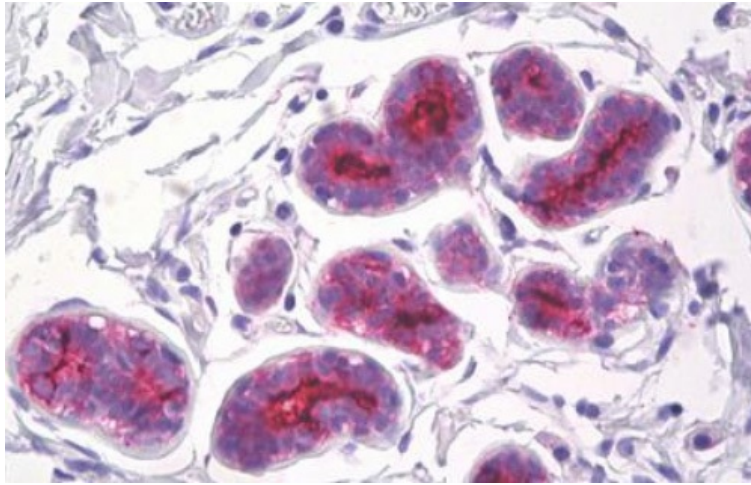
Mucin 1, cell surface associated (MUC-1) or polymorphic epithelial mucin (PEM) is a mucin encoded by the MUC1 gene in humans. MUC-1 is a glycoprotein with extensive O-linked glycosylation of its extracellular domain. Mucins line the apical surface of epithelial cells in the lungs, stomach, intestines, eyes and several other organs.

The protein serves a protective function by binding to pathogens and also functions in a cell signaling capacity.

Overexpression, aberrant intracellular localization, and changes in glycosylation of this protein have been associated with colon, breast, ovarian, lung and pancreatic cancers.

Synonyms:

MUC-1, PEMT, Episialin, EMA, H23AG, PUM, DF3, CA 15-3

Product images:

Formalin-Fixed, Paraffin-Embedded Human Breast tissue stained with CD227 Antibody (Clone 214D4) at 10 ug/ml after heat-induced antigen retrieval.