

## Product datasheet for **AM32795PU-N**

### Prostate Specific Antigen (KLK3) Mouse Monoclonal Antibody [Clone ID: 1A7]

#### Product data:

Product Type:	Primary Antibodies
Clone Name:	1A7
Applications:	Elispot, FC, IF, IHC, WB
Recommended Dilution:	<b>ELISPOT.</b> <b>Western blot.</b> <b>Flow Cytometry.</b> <b>Immunocytochemistry.</b> <b>Immunohistochemistry on Frozen Sections.</b> <b>Immunohistochemistry on Paraffin Sections</b> (10 µg/ml).
Reactivity:	Feline, Human
Host:	Mouse
Isotype:	IgG1
Clonality:	Monoclonal
Immunogen:	PSA/Prostate Specific Antigen antibody was raised against Human Prostate-specific antigen (PSA)
Specificity:	Recognizes PSA.
Formulation:	PBS State: Purified State: Liquid purified IgG fraction Preservative: 0.09% Sodium Azide
Concentration:	lot specific
Purification:	Protein A Chromatography
Conjugation:	Unconjugated
Storage:	Store undiluted at 2-8°C for one month or (in aliquots) at -20°C for longer. Avoid repeated freezing and thawing.
Stability:	Shelf life: one year from despatch.
Gene Name:	kallikrein related peptidase 3



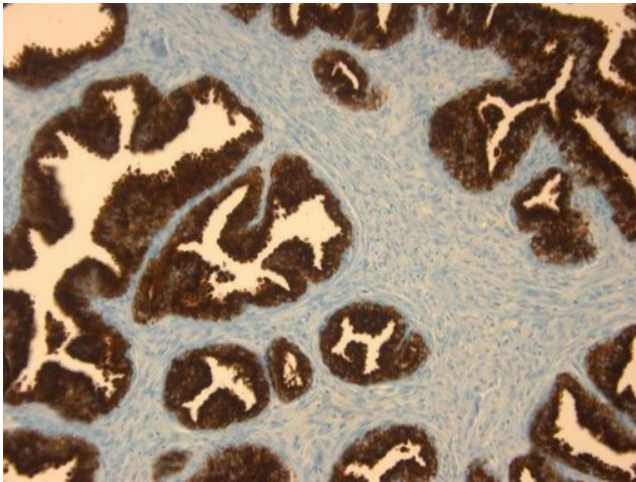
[View online »](#)

**Database Link:** [Entrez Gene 354 Human P07288](#)

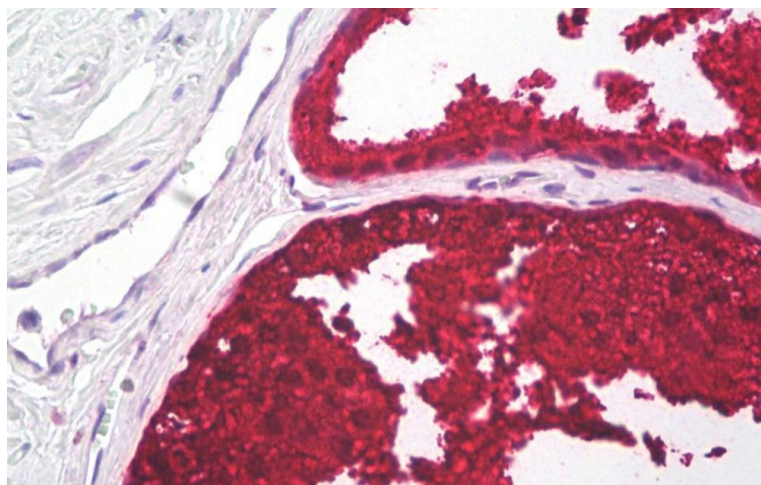
**Background:** Kallikreins are a subgroup of serine proteases having diverse physiological functions. Growing evidence suggests that many kallikreins are implicated in carcinogenesis and some have potential as novel cancer and other disease biomarkers. This gene is one of the fifteen kallikrein subfamily members located in a cluster on chromosome 19. Its protein product is a protease present in seminal plasma. Prostate-specific antigen (PSA), also known as gamma-seminoprotein or kallikrein-3 (KLK3), is a 33 kDa glycoprotein encoded in humans by the KLK3 gene. PSA is a member of the kallikrein-related peptidase family and is secreted by the epithelial cells of the prostate gland. PSA is present in small quantities in the serum of men with healthy prostates, but is often elevated in the presence of prostate cancer or other prostate disorders.

**Synonyms:** Prostate-specific antigen, Semenogelase, Gamma-seminoprotein, P-30 antigen

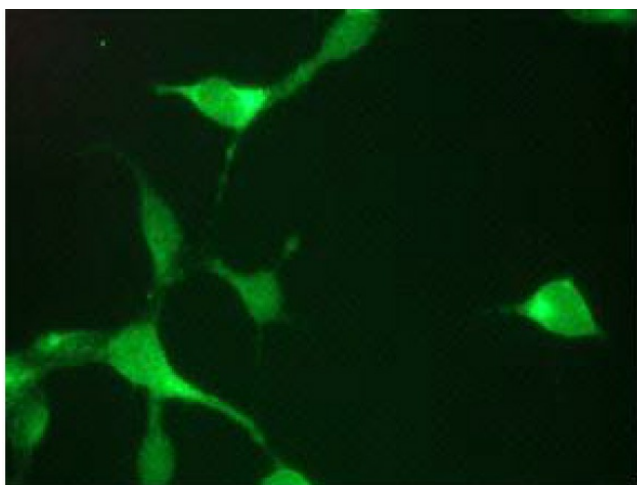
**Product images:**



Immunohistochemistry on Paraffin Section of Human prostate



Formalin-Fixed, Paraffin-Embedded Human Prostate tissue stained with PSA Antibody at 10 ug/ml after heat-induced antigen retrieval.



Immunofluorescent staining of LNCaP cells.