

## Product datasheet for **AM32703FC-N**

### Cd4 Rat Monoclonal Antibody [Clone ID: GK1.5]

#### Product data:

Product Type:	Primary Antibodies
Clone Name:	GK1.5
Applications:	FC, IF
Recommended Dilution:	<b>Flow Cytometry</b> (Cell Surface): 0.031-1.0 µg/10 <sup>6</sup> cells.
Reactivity:	Mouse
Host:	Rat
Isotype:	IgG2b
Clonality:	Monoclonal
Specificity:	Recognizes Mouse CD4. Other species not tested.
Formulation:	PBS, pH 7.4 Label: FITC State: Purified State: Liquid purified IgG fraction Preservative: 0.05% Sodium Azide Label: Fluorescein
Concentration:	lot specific
Purification:	Protein G Chromatography
Conjugation:	FITC
Storage:	Store undiluted at 2-8°C. <b>DO NOT FREEZE!</b> This product is photosensitive and should be protected from light.
Stability:	Shelf life: one year from despatch.
Predicted Protein Size:	52 kDa
Gene Name:	CD4 antigen
Database Link:	<a href="#">Entrez Gene 12504 Mouse P06332</a>



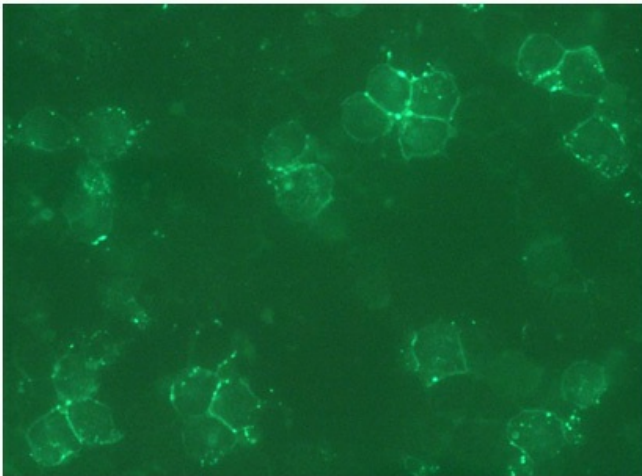
[View online »](#)

**Background:**

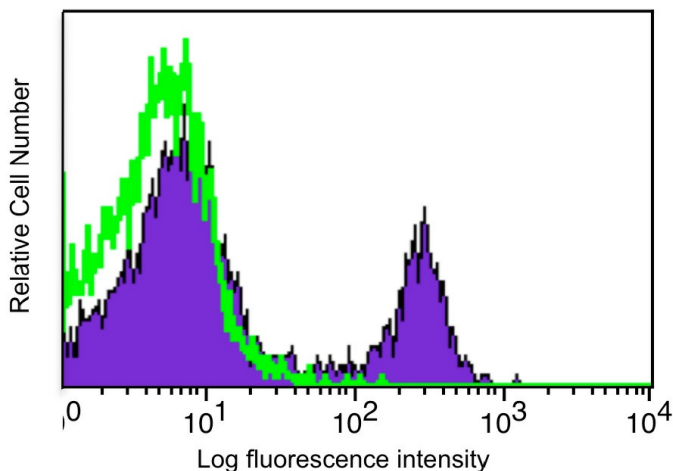
CD4 (cluster of differentiation 4) is a glycoprotein expressed on the surface of T helper cells, regulatory T cells, monocytes, macrophages, and dendritic cells. It is a member of the immunoglobulin superfamily. On T cells, it is the co-receptor for the T cell receptor (TCR) and amplifies the signal generated by the TCR by recruiting the tyrosine kinase Lck that is essential for activating many molecules involved in the signaling cascade of an activated T cell. It is an important component of the immune system and is also the cellular receptor for HIV-1. It consists of a cytoplasmic tail, one transmembrane region, and four extracellular domains, D1-D4.

**Synonyms:**

T-cell surface antigen T4/Leu-3

**Product images:**

BALB/c mouse splenocytes were stained with 0.031 ug /10<sup>6</sup> cells FITC conjugated anti-Mouse CD4 Antibody Cat.-No AM32703FC-N (Clone GK1.5) and cytocentrifuged onto a glass slide prior to imaging by fluorescence microscopy (original magnification 100x)



BALB/c Mouse splenocytes were stained with a 0.031 ug/10<sup>6</sup> cells FITC conjugated anti-Mouse CD4 Antibody Cat.-No AM32703FC-N (Clone GK1.5) (purple) or Negative Control (green).