

## Product datasheet for **AM32268SU-N**

### CD21 (CR2) Mouse Monoclonal Antibody [Clone ID: 2G9]

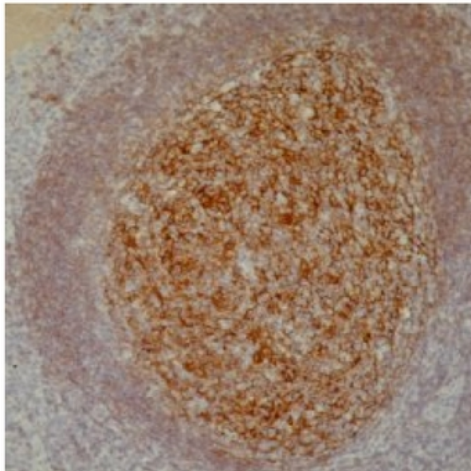
#### Product data:

Product Type:	Primary Antibodies
Clone Name:	2G9
Applications:	IHC
Recommended Dilution:	<b>Immunohistochemistry on Frozen Sections.</b> <b>Immunohistochemistry on Paraffin Embedded Sections.</b> <i>Recommended Dilutions: 1/25-1/100</i> <i>Recommended Positive Control: Tonsil, Lymph Node.</i> <i>Preparation and Pretreatment</i> 1. Cut 3-4 $\mu\text{m}$ section of formalin-fixed paraffin-embedded tissue and place on positively charged slides; dry overnight at 58°C. 2. Deparaffinize, rehydrate, and epitope retrieve; the preferred method is the use of Heat Induced Epitope Retrieval (HIER) techniques in conjunction with a pressure cooker. The preferred method allows for simultaneous deparaffinization, rehydration, and epitope retrieval. Upon completion, rinse with 5 changes of distilled or deionized water. 3. If using HRP detection system, place slides in peroxide block for 10 minutes; rinse. If using AP detection system, omit this step.
Reactivity:	Human
Host:	Mouse
Isotype:	IgG2a
Clonality:	Monoclonal
Specificity:	This antibody recognises the Human CD21 cell surface antigen, a 140 glycoprotein. CD21 is expressed by mature B lymphocytes. Anti-CD21 is useful in the identification of follicular dendritic cell matrix found in normal lymph nodes and tonsillar tissue. This antibody also labels follicular dendritic cell tumor/sarcomas. The antigen is absent on T-lymphocytes, monocytes, and granulocytes.
Formulation:	Tris Buffer, pH 7.3-7.7 State: Supernatant State: Liquid Tissue Culture Supernatant Stabilizer: 0.9% BSA Preservative: 0.09% Sodium Azide



[View online »](#)

<b>Conjugation:</b>	Unconjugated
<b>Storage:</b>	Store the antibody undiluted at 2-8°C for one month or (in aliquots) at -20°C for longer. Avoid repeated freezing and thawing.
<b>Stability:</b>	Shelf life: one year from despatch.
<b>Gene Name:</b>	complement component 3d receptor 2
<b>Database Link:</b>	<a href="#">Entrez Gene 1380 Human P20023</a>
<b>Background:</b>	CD21, also known as CR2, C3d receptor and EBV receptor, is expressed strongly on mature B cells, follicular dendritic cells and weakly on immature thymocytes and T lymphocytes. In B-cell ontogeny, CD21 appears after the pre-B-stage, is maintained during peripheral B-cell development and is lost upon terminal differentiation into plasma cells. CD21 expression is also gradually lost after stimulation of B cells in vitro. CD21 functions as receptor for C3d, C3dg and iC3b Complement components, for EBV and for IFN $\alpha$ . CD21 binds to CD23 and associates with CD19, CD81 and Leu13 to form a large signal-transduction complex involved in B cell activation.
<b>Synonyms:</b>	Complement receptor type 2, CR2, C3DR, C3d receptor, EBV Receptor, Dendritic Cell Marker

**Product images:**

Formalin-Fixed, Paraffin-Embedded Human Tonsil stained with CD21 antibody clone 2G9