

Product datasheet for **AM32014PU-N**

RPP20 (POP7) Mouse Monoclonal Antibody [Clone ID: 1F11]

Product data:

Product Type:	Primary Antibodies
Clone Name:	1F11
Applications:	ELISA, WB
Recommended Dilution:	ELISA. Immunoblotting. <i>Recommended Solvent:</i> 100 mM PBS or Tris-HCl, pH 7.0
Reactivity:	Human
Host:	Mouse
Isotype:	IgG2a
Clonality:	Monoclonal
Immunogen:	Recombinant GST-hRPP20 (NCBI accession number AAC24113, expression vector pGEC-2T), expressed in <i>E.coli</i> .
Specificity:	Specificity has been tested in ELISA. In immunoblotting, under less stringent washing conditions, a weaker band of approximately 60 kDa is also detected (Figure 1, <i>Right Panel</i>). Additional tests for cross reactivity have not yet been performed.
Formulation:	10 mM Ammonium Bicarbonate buffer State: Purified State: Lyophilized purified Ig fraction Stabilizer: 2 mg BSA
Reconstitution Method:	Dissolve in 200 µl buffer for a 0.5 mg/ml antibody concentration in 1% BSA
Concentration:	lot specific
Conjugation:	Unconjugated
Storage:	Store the antibody undiluted at 2-8°C or Add up to 0.05% Sodium Azide for long term storage.
Stability:	Shelf life: One year from despatch.
Predicted Protein Size:	20 kDa
Gene Name:	POP7 homolog, ribonuclease P/MRP subunit



[View online »](#)

Database Link: [Entrez Gene 10248 Human O75817](#)

Background: The nuclei of eukaryotic cells contain several classes of small RNA-protein complexes. SnRNPs (small nuclear ribonucleoproteins) are involved in splicing of pre-mRNAs (the excision of introns) in the nucleoplasm. RPP20 is part of such a complex. SnoRNPs (small nucleolar ribonucleoproteins) are involved in the maturation of pre-ribosomal RNA in the nucleoli. Pre-rRNA processing and modification require both the snoRNA and the protein constituents (such as Rpp20) of these complexes. Generally, snoRNPs contain a number of common proteins, which are shared with other snoRNPs of the same family, next to several particle-specific proteins. On average, snoRNPs contain about 6-10 protein subunits.

Synonyms: hPOP7, RPP20

Product images:

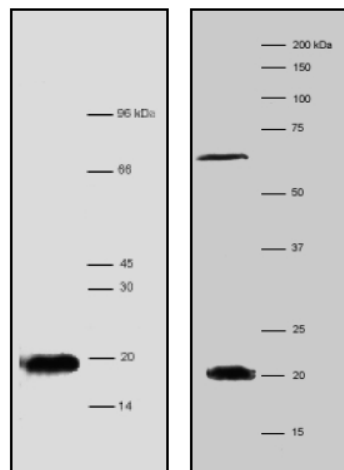


Figure 1. Specificity of anti-hRPP20 Immunoglobulin, clone 1F11, determined by immunoblot analysis. Blot contains total cell extract of HEp2 cells. Incubated with antibody fraction (0.5 mg/ml) diluted 500X in PBS containing 0.05% tween-20 and 5% non fat dry milk. Left: washing under stringent conditions. Right: washing under less stringent conditions.