

## Product datasheet for **AM32008PU-N**

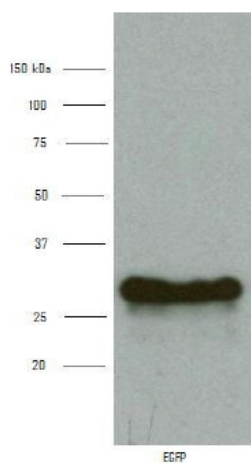
### EBFP Mouse Monoclonal Antibody [Clone ID: 3A6]

#### Product data:

Product Type:	Primary Antibodies
Clone Name:	3A6
Applications:	ELISA, WB
Recommended Dilution:	<b>ELISA.</b> <b>Immunoblotting.</b>
Host:	Mouse
Isotype:	IgG1
Clonality:	Monoclonal
Immunogen:	Recombinant EBFP (NCBI accession number AX_766758 REGION: 1-717, expression vector pGEX-1N), expressed in E.coli.
Specificity:	Specificity has been tested in ELISA and immunoblotting. In immunoblot the antibody cross reacts with YFP. Additional tests for cross reactivity have not yet been performed.
Formulation:	10 mM Ammonium Bicarbonate buffer State: Purified State: Lyophilized purified Ig fraction Stabilizer: 2 mg BSA
Purification:	Protein A Chromatography
Conjugation:	Unconjugated
Storage:	Store the antibody undiluted at 2-8°C.
Stability:	Shelf life: One year from despatch.
Background:	Fluorescent proteins, like EBFP, can be used as protein "tags" to study the subcellular localization of proteins and/or their translocation upon stimulation or as markers for transfection in transient and stable expression systems.
Synonyms:	Enhanced Blue Fluorescent Protein



[View online »](#)

**Product images:**

Specificity of Anti-Fluorescent Protein Immunoglobulin, clone 3A6, determined by immunoblot analysis. Blot contains total cell extract containing recombinant EGFP (predicted band size 27 kDa). Incubated with antibody fraction (0.5 mg/ml) 1000X diluted in P