

Product datasheet for **AM31999PU-N**

Chicken IgG / Chicken IgY Mouse Monoclonal Antibody [Clone ID: 14B11]

Product data:

| | |
|-----------------------|---|
| Product Type: | Secondary Antibodies |
| Product Name: | Chicken IgG / Chicken IgY Mouse Monoclonal Antibody [Clone ID: 14B11] |
| Clone Name: | 14B11 |
| Applications: | ELISA, WB |
| Recommended Dilution: | ELISA. Immunoblotting. |
| Reactivity: | Chicken |
| Host: | Mouse |
| Immunogen: | Polyclonal IgY (Promega, REF G1161) |
| Isotype: | IgG1 |
| Formulation: | PBS, pH 7.2 State: Purified State: Liquid purified IgY fraction |
| Concentration: | lot specific |
| Purification: | Protein A Chromatography |
| Conjugation: | Unconjugated |



[View online »](#)

Product images:

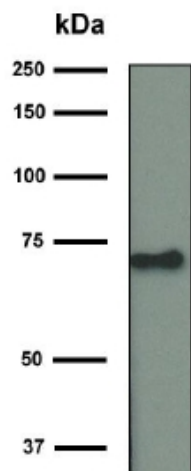


Figure 1: Specificity of Anti- chicken IgG (IgY) Heavy Chain Immunoglobulin, clone 1.4B11, determined by immunoblot analysis. Blot contains Na-alginate precipitated yolk IgY (predicted band size [heavy chain IgY] 70 kDa). Incubated with antibody fraction (culture supernatant) 10X diluted in PBS containing 0.05% tween-20 and 5% non fat dry milk.