

## Product datasheet for **AM31963PU-N**

### Cytochrome b5 (CYB5A) (1-135) Mouse Monoclonal Antibody [Clone ID: 1A8]

#### Product data:

Product Type:	Primary Antibodies
Clone Name:	1A8
Applications:	ELISA, IHC, IP, WB
Recommended Dilution:	<b>ELISA.</b> <b>Immunohistochemistry on Paraffin Sections:</b> 5 µg/ml. <b>Immunoprecipitation.</b> <b>Western Blot:</b> 1/500 - 1/1000.
Reactivity:	Human
Host:	Mouse
Isotype:	IgG1
Clonality:	Monoclonal
Immunogen:	CYB5A (AAH15182, 1 a.a. ~ 135 a.a) full-length recombinant protein with GST tag
Specificity:	This antibody recognizes Cytochrome b5 at aa 1-135.
Formulation:	PBS, pH 7.4 State: Purified State: Liquid purified Ig fraction
Concentration:	lot specific
Purification:	Protein A purified. Sourced in Ascites.
Conjugation:	Unconjugated
Storage:	Upon receipt, store undiluted (in aliquots) at -20°C. Avoid repeated freezing and thawing.
Stability:	Shelf life: one year from despatch.
Gene Name:	cytochrome b5 type A
Database Link:	<a href="#">Entrez Gene 1528 Human P00167</a>
Background:	CYB5A, also known as cytochrome b5 isoform 1, belongs to the cytochrome b5 family. Cytochrome b5 is a membrane bound hemoprotein which function as an electron carrier for several membrane bound oxygenases.

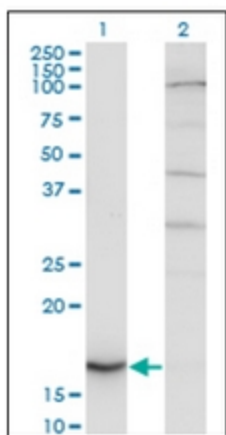


[View online »](#)

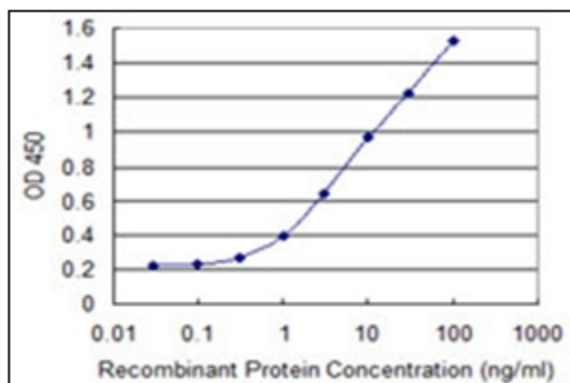
Synonyms: CYB5A, CYB5, MCB5

Protein Families: Transmembrane

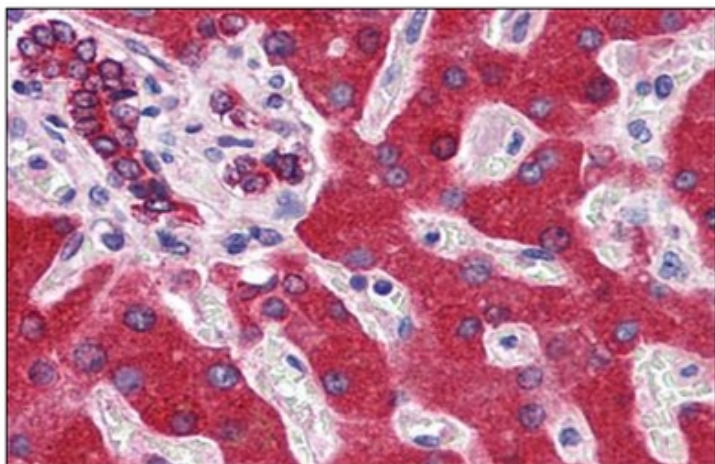
**Product images:**



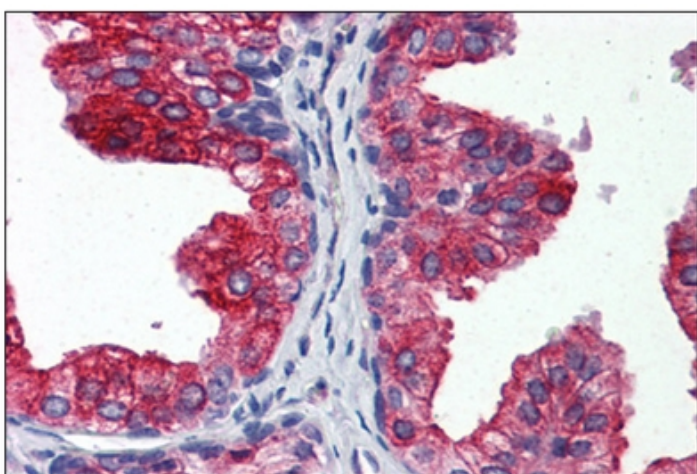
Western Blot analysis of CYB5A expression in transfected 293T cell line by CYB5A monoclonal antibody (M06), clone 1A8.



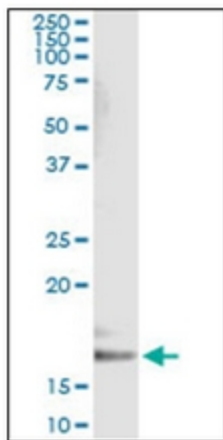
Detection limit for recombinant GST tagged CYB5A is 0.1 ng/ml as a capture antibody.



Human Liver: Formalin-Fixed, Paraffin-Embedded (FFPE)



Human Prostate: Formalin-Fixed, Paraffin-Embedded (FFPE)



Immunoprecipitation of CYB5A transfected lysate using anti-CYB5A monoclonal antibody and Protein A Magnetic Bead.