

## Product datasheet for **AM31962PU-N**

### Cytochrome b5 (CYB5A) (1-135) Mouse Monoclonal Antibody [Clone ID: 4C2]

#### Product data:

Product Type:	Primary Antibodies
Clone Name:	4C2
Applications:	ELISA, IHC, WB
Recommended Dilution:	<b>ELISA.</b> <b>Immunohistochemistry on Paraffin Sections:</b> 5 µg/ml. <b>Western Blot:</b> 1/500 - 1/1000.
Reactivity:	Human
Host:	Mouse
Isotype:	IgG1
Clonality:	Monoclonal
Immunogen:	CYB5A (AAH15182, 1 a.a. ~ 135 a.a) full-length recombinant protein with GST tag
Specificity:	This antibody recognizes Cytochrome b5 at aa 1-135.
Formulation:	PBS, pH 7.2 State: Purified State: Liquid purified Ig fraction
Concentration:	lot specific
Purification:	Protein A Chromatography
Conjugation:	Unconjugated
Storage:	Upon receipt, store the antibody (in aliquots) at -20°C or -80°C. Avoid repeated freezing and thawing.
Stability:	Shelf life: one year from despatch.
Gene Name:	cytochrome b5 type A
Database Link:	<a href="#">Entrez Gene 1528 Human P00167</a>
Background:	CYB5A, also known as cytochrome b5 isoform 1, belongs to the cytochrome b5 family. Cytochrome b5 is a membrane bound hemoprotein which function as an electron carrier for several membrane bound oxygenases.

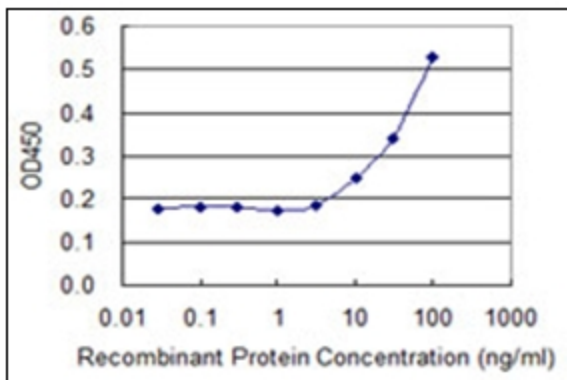


[View online »](#)

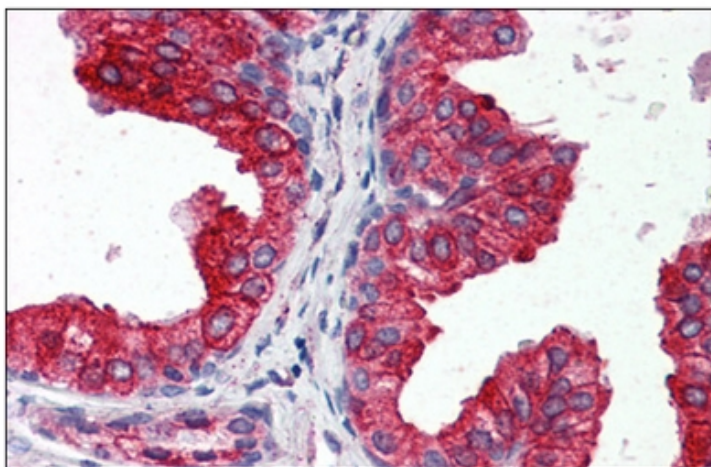
Synonyms: CYB5A, CYB5, MCB5

Protein Families: Transmembrane

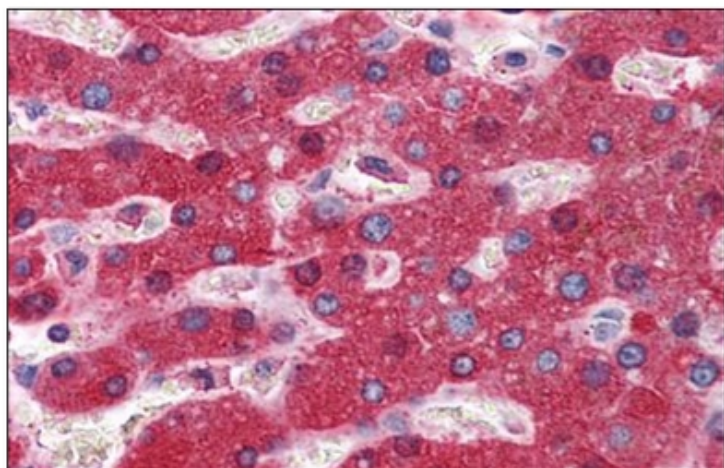
### Product images:



Detection limit for recombinant GST tagged CYB5A is 3 ng/ml as a capture antibody.



Human Prostate: Formalin-Fixed, Paraffin-Embedded (FFPE)



Human Liver: Formalin-Fixed, Paraffin-Embedded (FFPE)