

## Product datasheet for **AM31961PU-N**

### ATF2 (241-340) Mouse Monoclonal Antibody [Clone ID: 4A3]

#### Product data:

Product Type:	Primary Antibodies
Clone Name:	4A3
Applications:	ELISA, IHC, WB
Recommended Dilution:	<b>ELISA.</b> <b>Immunohistochemistry on Paraffin Sections:</b> 5 µg/ml. <b>Western Blot.</b>
Reactivity:	Human
Host:	Mouse
Isotype:	IgG1
Clonality:	Monoclonal
Immunogen:	ATF2 (NP_001871, 241 a.a. ~ 340 a.a) full length recombinant protein with GST tag
Specificity:	This antibody recognizes ATF2 at aa 241-240.
Formulation:	PBS, pH 7.4 State: Purified State: Liquid purified Ig fraction
Concentration:	lot specific
Purification:	Protein A Chromatography
Conjugation:	Unconjugated
Storage:	Upon receipt, store the antibody (in aliquots) at -20°C. Avoid repeated freezing and thawing.
Stability:	Shelf life: one year from despatch.
Gene Name:	activating transcription factor 2
Database Link:	<a href="#">Entrez Gene 1386 Human P15336</a>



[View online »](#)

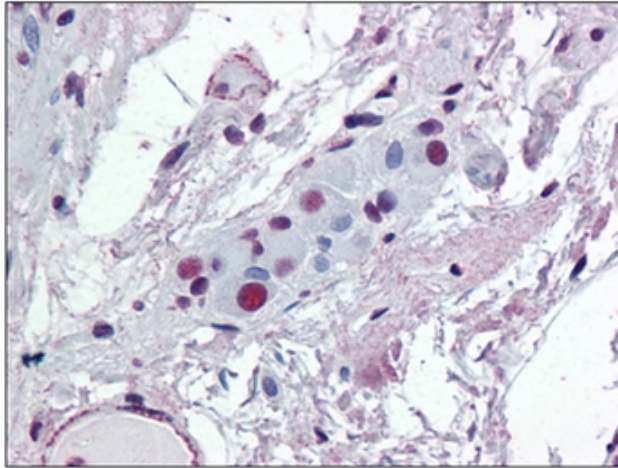
**Background:** The transcription factor ATF-2 (also called CRE-BP1) is a member of the ATF/CREB family of leucine zipper proteins. ATF-2 forms homodimers and heterodimers with c-Jun to initiate CRE-dependent transcription. Phosphorylation of ATF-2 at Thr 69 and Thr 71 by stress-activated kinases is necessary for transcriptional activation. Myc also induces phosphorylation of ATF-2 at Thr 69 and Thr 71 to prolong the half-life of ATF-2. ATF-2 also functions as a histone acetyltransferase (HAT) by specifically acetylating histones H2B and H4 in vitro.

**Synonyms:** ATF-2, CREB2, CREBP1, Activating transcription factor 2, CRE-BP1, HB16, CREB-2

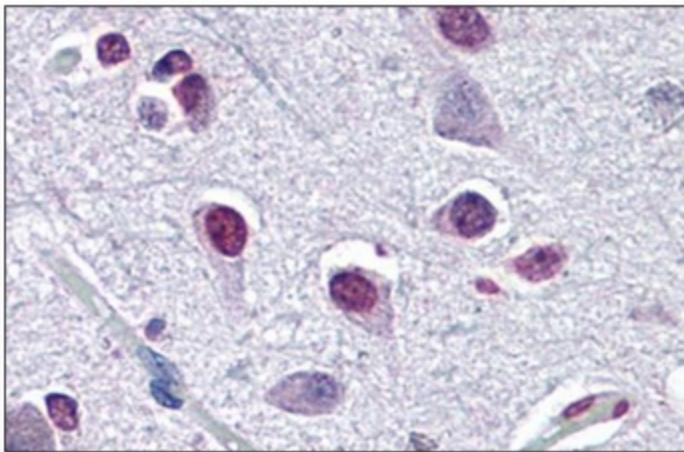
**Protein Families:** Druggable Genome, Transcription Factors

**Protein Pathways:** MAPK signaling pathway

### Product images:



Human Small Intestine, Submucosal Plexus:  
Formalin-Fixed, Paraffin-Embedded (FFPE)



Human Brain, Cortex: Formalin-Fixed, Paraffin-Embedded (FFPE)