

## Product datasheet for **AM31956PU-N**

### PPP2R2B Mouse Monoclonal Antibody [Clone ID: 1F3]

#### Product data:

Product Type:	Primary Antibodies
Clone Name:	1F3
Applications:	ELISA, IHC, IP, WB
Recommended Dilution:	<b>ELISA.</b> <b>Immunohistochemistry on Paraffin Sections:</b> 5 µg/ml. <b>Immunoprecipitation.</b> <b>Western Blot.</b>
Reactivity:	Human
Host:	Mouse
Isotype:	IgG2a
Clonality:	Monoclonal
Immunogen:	Recombinant protein
Specificity:	This antibody recognizes Human PPP2R2B.
Formulation:	PBS, pH 7.2 State: Purified State: Liquid purified Ig fraction
Concentration:	lot specific
Purification:	Protein A Chromatography
Conjugation:	Unconjugated
Storage:	Store the antibody undiluted at 2-8°C for one month or (in aliquots) at -20°C for longer. Avoid repeated freezing and thawing.
Stability:	Shelf life: one year from despatch.
Gene Name:	protein phosphatase 2 regulatory subunit Bbeta
Database Link:	<a href="#">Entrez Gene 5521 Human</a> <a href="#">Q00005</a>



[View online »](#)

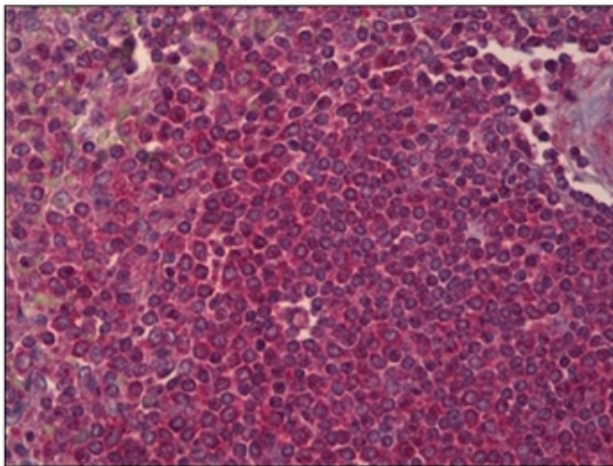
**Background:** PPP2R2B belongs to the phosphatase 2 regulatory subunit B family. Protein phosphatase 2 is one of the four major Ser/Thr phosphatases, and it is implicated in the negative control of cell growth and division. It consists of a common heteromeric core enzyme, which is composed of a catalytic subunit and a constant regulatory subunit, that associates with a variety of regulatory subunits. The B regulatory subunit might modulate substrate selectivity and catalytic activity. This protein is a beta isoform of the regulatory subunit B55 subfamily.

**Synonyms:** PP2A subunit B B-beta isoform, B55-beta isoform, PR55-beta isoform, R2-beta isoform, protein phosphatase 2A 55 kDa regulatory subunit B beta

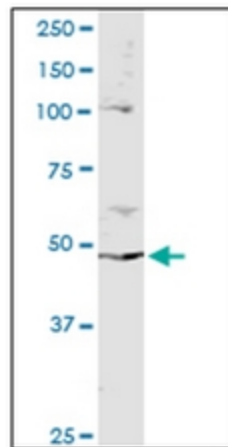
**Protein Families:** Druggable Genome, Phosphatase

**Protein Pathways:** Tight junction

**Product images:**



Human Spleen: Formalin-Fixed, Paraffin-Embedded (FFPE)



Immunoprecipitation of PPP2R2B transfected lysate using anti-PPP2R2B monoclonal antibody and Protein A magnetic bead, immunoblotted with PPP2R2B rabbit polyclonal antibody.