

Product datasheet for **AM31955PU-N**

JNK1 (MAPK8) Mouse Monoclonal Antibody [Clone ID: 4H5]

Product data:

Product Type:	Primary Antibodies
Clone Name:	4H5
Applications:	ELISA, IHC, IP, WB
Recommended Dilution:	ELISA. Immunohistochemistry on Paraffin Sections: 5 µg/ml. Immunoprecipitation. Western Blot.
Reactivity:	Human
Host:	Mouse
Isotype:	IgG2b
Clonality:	Monoclonal
Immunogen:	Recombinant protein
Specificity:	This antibody recognizes Human MAPK8/JNK1.
Formulation:	PBS, pH 7.2 State: Purified State: Liquid purified Ig fraction
Purification:	Protein A Chromatography
Conjugation:	Unconjugated
Storage:	Store the antibody undiluted at 2-8°C for one month or (in aliquots) at -20°C for longer. Avoid repeated freezing and thawing.
Stability:	Shelf life: one year from despatch.
Gene Name:	mitogen-activated protein kinase 8
Database Link:	Entrez Gene 5599 Human P45983



[View online »](#)

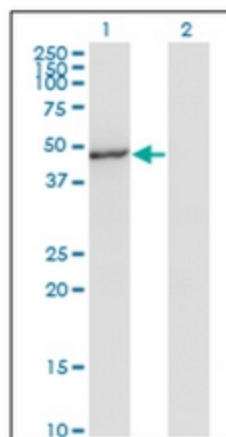
Background: JNK1, a MAPK type protein kinase, regulates cell apoptosis, differentiation and growth in response to growth factors, inflammatory cytokines and cellular stress. JNK1 is phosphorylated by MKK4/MAP2K4 and MKK7/MAP2K7. Activated JNK1 translocates to the nucleus where it phosphorylates transcription factors, including c-Jun, ATF2, ELK1, Jun-D and NFAT4. At least four alternatively spliced transcript variants encoding distinct isoforms, 384 and 427 amino acids, have been identified.

Synonyms: Mitogen-activated protein kinase 8, c-Jun N-terminal kinase 1, JNK-46, JNK-1, PRKM8

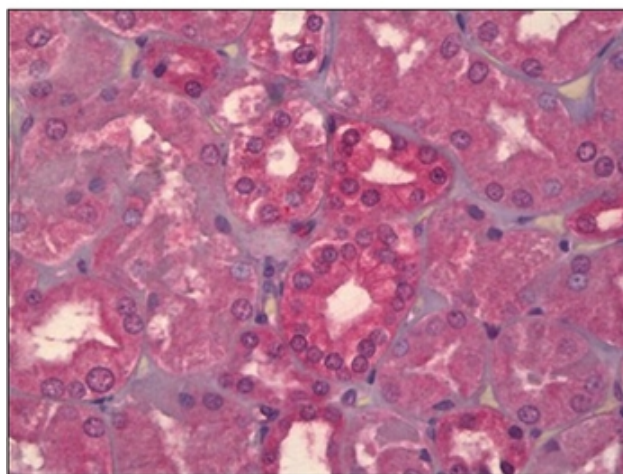
Protein Families: Druggable Genome, ES Cell Differentiation/IPS, Protein Kinase

Protein Pathways: Adipocytokine signaling pathway, Colorectal cancer, Epithelial cell signaling in Helicobacter pylori infection, ErbB signaling pathway, Fc epsilon RI signaling pathway, Focal adhesion, GnRH signaling pathway, Insulin signaling pathway, MAPK signaling pathway, Neurotrophin signaling pathway, NOD-like receptor signaling pathway, Pancreatic cancer, Pathways in cancer, Progesterone-mediated oocyte maturation, RIG-I-like receptor signaling pathway, Toll-like receptor signaling pathway, Type II diabetes mellitus, Wnt signaling pathway

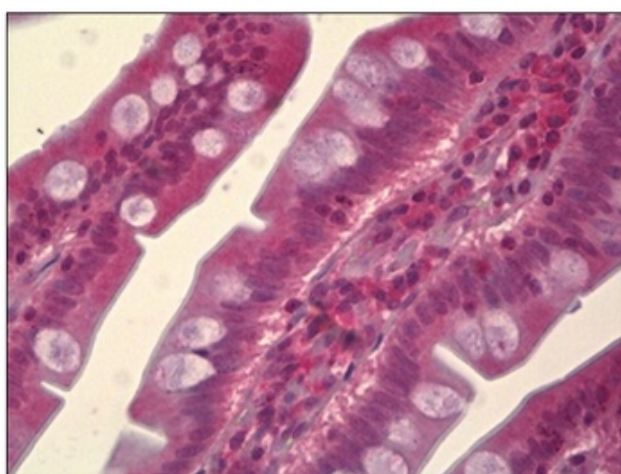
Product images:



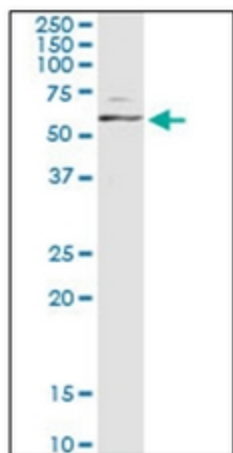
Western Blot analysis of MAPK8 expression in transfected 293T cell line by MAPK8 monoclonal antibody, clone 4H5.



Human Kidney: Formalin-Fixed, Paraffin-Embedded (FFPE)



Human Small Intestine: Formalin-Fixed, Paraffin-Embedded (FFPE)



Immunoprecipitation of MAPK8 transfected lysate using anti-MAPK8 monoclonal antibody and Protein A magnetic bead, immunoblotted with MAPK8 Rabbit polyclonal antibody.