

## Product datasheet for **AM31943PU-N**

### **MSK1 (RPS6KA5) Mouse Monoclonal Antibody [Clone ID: 1G7]**

#### Product data:

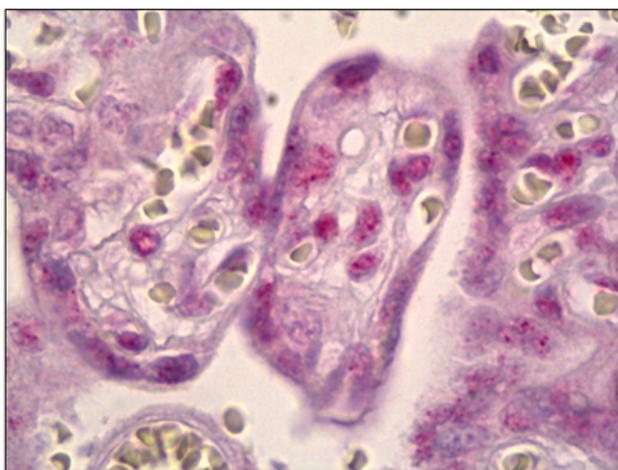
Product Type:	Primary Antibodies
Clone Name:	1G7
Applications:	ELISA, IHC
Recommended Dilution:	<b>ELISA.</b> <b>Immunohistochemistry on Paraffin Sections:</b> 10 µg/ml.
Reactivity:	Human
Host:	Mouse
Isotype:	IgG2a
Clonality:	Monoclonal
Immunogen:	Recombinant protein
Specificity:	This antibody recognizes Human RPS6KA5 / MSK1.
Formulation:	PBS, pH 7.2 State: Purified State: Liquid purified Ig fraction
Purification:	Protein A Chromatography
Conjugation:	Unconjugated
Storage:	Store the antibody undiluted at 2-8°C for one month or (in aliquots) at -20°C for longer. Avoid repeated freezing and thawing.
Stability:	Shelf life: one year from despatch.
Gene Name:	ribosomal protein S6 kinase A5
Database Link:	<a href="#">Entrez Gene 9252 Human O75582</a>
Background:	MSK1 is a mitogen- and stress-activated protein kinase that belongs to the MSK family. In vivo, the MSKs act as ERK MAPK and p38 MAPK substrates. MSK1, and likely MSK2, localize to the nucleus and are strong CREB kinases.
Synonyms:	Ribosomal protein S6 kinase alpha-5, RSKL
Protein Families:	Druggable Genome, Protein Kinase, Transcription Factors



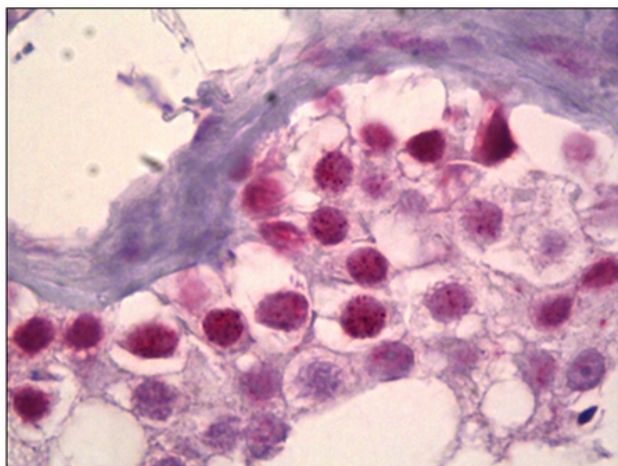
[View online »](#)

Protein Pathways: Bladder cancer, MAPK signaling pathway, Neurotrophin signaling pathway

**Product images:**



Human Placenta: Formalin-Fixed, Paraffin-Embedded (FFPE)



Human Testis: Formalin-Fixed, Paraffin-Embedded (FFPE)