

Product datasheet for **AM31936PU-N**

PTPN22 Mouse Monoclonal Antibody [Clone ID: 1A6]

Product data:

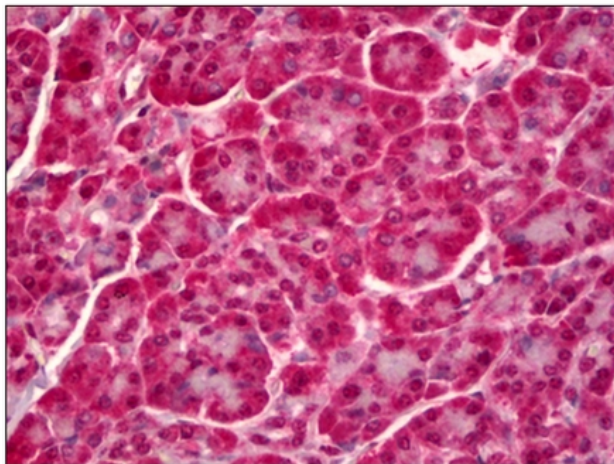
Product Type:	Primary Antibodies
Clone Name:	1A6
Applications:	ELISA, IHC, WB
Recommended Dilution:	ELISA. Immunohistochemistry on Paraffin Sections: 5 µg/ml. Western Blot.
Reactivity:	Human
Host:	Mouse
Isotype:	IgG2a
Clonality:	Monoclonal
Immunogen:	Recombinant protein
Specificity:	This antibody recognizes Human PTPN22.
Formulation:	PBS, pH 7.2 State: Purified State: Liquid purified Ig fraction
Purification:	Protein A Chromatography
Conjugation:	Unconjugated
Storage:	Store the antibody undiluted at 2-8°C for one month or (in aliquots) at -20°C for longer. Avoid repeated freezing and thawing.
Stability:	Shelf life: one year from despatch.
Gene Name:	protein tyrosine phosphatase, non-receptor type 22
Database Link:	Entrez Gene 26191 Human Q9Y2R2
Background:	Lymphoid phosphatase LyP, a NT4 non-receptor protein tyrosine phosphatase, has been suggested to affect T cell signaling and to interact with Grb2 and the proto-oncogene c-Cbl. At least two alternatively spliced variants have been reported.
Synonyms:	PTPN8, Lymphoid phosphatase, LyP, LYP1, LYP2, PEP



[View online »](#)

Protein Families: Druggable Genome, Phosphatase

Product images:



Human Pancreas: Formalin-Fixed, Paraffin-Embedded (FFPE)