

Product datasheet for **AM31935PU-N**

PTPRN Mouse Monoclonal Antibody [Clone ID: 8E3]

Product data:

Product Type:	Primary Antibodies
Clone Name:	8E3
Applications:	ELISA, IHC, WB
Recommended Dilution:	ELISA. Immunohistochemistry on Paraffin Sections: 5 µg/ml. Western Blot (Transfected lysate, Recombinant protein).
Reactivity:	Human
Host:	Mouse
Isotype:	IgG2a
Clonality:	Monoclonal
Immunogen:	Recombinant protein encoding aa 205-311 of NP_002837
Specificity:	This antibody recognizes Human PTPRN.
Formulation:	PBS, pH 7.4 State: Purified State: Liquid purified Ig fraction from Ascites
Concentration:	lot specific
Purification:	Protein A Chromatography
Conjugation:	Unconjugated
Storage:	Store undiluted at 2-8°C for one month or (in aliquots) at -20°C for longer. Avoid repeated freezing and thawing.
Stability:	Shelf life: one year from despatch.
Gene Name:	protein tyrosine phosphatase, receptor type N
Database Link:	Entrez Gene 5798 Human Q16849



[View online »](#)

Background:

IA-2, a R8 receptor protein tyrosine phosphatase, is one of the major autoantigens in type 1 diabetes. Autoantibodies against IA-2 have been detected in large numbers newly diagnosed patients with type 1 diabetes and appear to identify a subgroup of prediabetic subjects who rapidly progress to type 1 diabetes; however, IA-2 polymorphisms do not appear to be associated with type 1 diabetes. Three alternative spliced variants of IA-2 have been documented and alternative splicing of IA-2 gene has been suggested to be a permissive genetic mechanism for autoimmunity against the IA-2 type 1 diabetes autoantigen.

Synonyms:

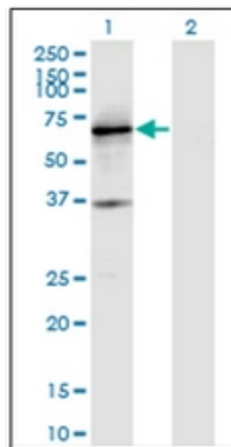
R-PTP-N, Islet cell antigen 512, ICA512, ICA3, PTP IA-2

Protein Families:

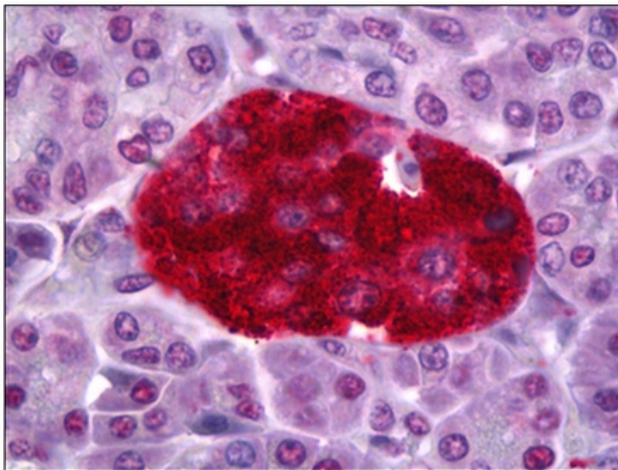
Druggable Genome, Transmembrane

Protein Pathways:

Type I diabetes mellitus

Product images:

Western Blot analysis of PTPRN expression in transfected 293T cell line by PTPRN monoclonal antibody, clone 8E3.



Human Pancreas, Islets of Langerhans: Formalin-Fixed, Paraffin-Embedded (FFPE)