

Product datasheet for **AM31933PU-N**

PRUNE (PRUNE1) Mouse Monoclonal Antibody [Clone ID: 1C11]

Product data:

Product Type:	Primary Antibodies
Clone Name:	1C11
Applications:	ELISA, IHC, WB
Recommended Dilution:	ELISA. Immunohistochemistry on Paraffin Sections: 5 µg/ml. Western Blot.
Reactivity:	Human
Host:	Mouse
Isotype:	IgG2a
Clonality:	Monoclonal
Immunogen:	Recombinant protein
Specificity:	This antibody recognizes Human PRUNE.
Formulation:	PBS, pH 7.2 State: Purified State: Liquid purified Ig fraction
Concentration:	lot specific
Purification:	Protein A Chromatography
Conjugation:	Unconjugated
Storage:	Store the antibody undiluted at 2-8°C for one month or (in aliquots) at -20°C for longer. Avoid repeated freezing and thawing.
Stability:	Shelf life: one year from despatch.
Gene Name:	prune exopolyphosphatase
Database Link:	Entrez Gene 58497 Human Q86TP1



[View online »](#)

Background:

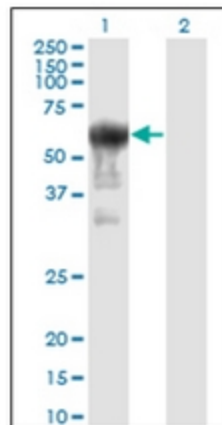
PRUNE, the human homologue of the Drosophila gene, is located in 1q21.3, a region highly amplified in human sarcomas, malignant tumours of mesenchymal origin. Human prune (h-prune), a phosphoesterase DHH family appertaining protein, physically interacts with nm23-H1, a metastasis suppressor gene. h-prune is involved in cellular motility and metastasis formation. Metastatic breast cancers were found to overexpress h-prune; h-prune was also found to be highly expressed in colorectal and pancreatic cancers. Hence h-prune is considered useful as a marker for tumor aggressiveness.

Synonyms:

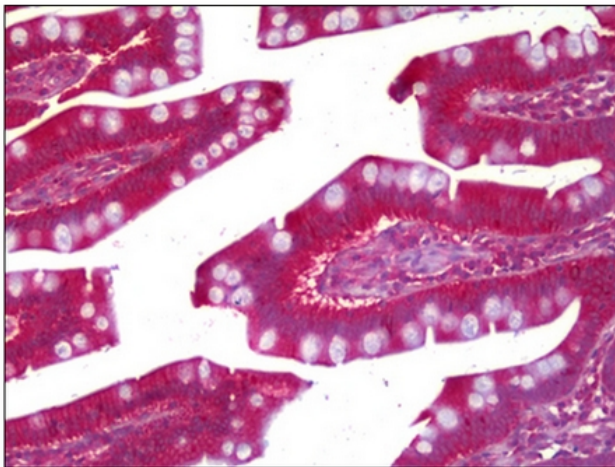
Protein prune homolog, hPrune, HTcD37, DRES17, DRES-17

Protein Pathways:

Purine metabolism

Product images:

Western Blot analysis of PRUNE expression in transfected 293T cell line by PRUNE monoclonal antibody, clone 1C11.



Human Small Intestine: Formalin-Fixed, Paraffin-Embedded (FFPE)