

Product datasheet for **AM31929PU-N**

CEACAM1 Mouse Monoclonal Antibody [Clone ID: 2F6]

Product data:

Product Type:	Primary Antibodies
Clone Name:	2F6
Applications:	ELISA, IHC, WB
Recommended Dilution:	ELISA. Immunohistochemistry on Paraffin Sections: 10 µg/ml. Western Blot: 1/500 - 1/1000.
Reactivity:	Human
Host:	Mouse
Isotype:	IgG1
Clonality:	Monoclonal
Immunogen:	Recombinant protein
Specificity:	This antibody recognizes Human CEACAM1.
Formulation:	PBS, pH 7.2 State: Purified State: Liquid purified Ig fraction
Concentration:	lot specific
Purification:	Protein A Chromatography
Conjugation:	Unconjugated
Storage:	Store undiluted at 2-8°C for one month or (in aliquots) at -20°C for longer. Avoid repeated freezing and thawing.
Stability:	Shelf life: one year from despatch.
Gene Name:	carcinoembryonic antigen related cell adhesion molecule 1
Database Link:	Entrez Gene 634 Human P13688



[View online »](#)

Background:

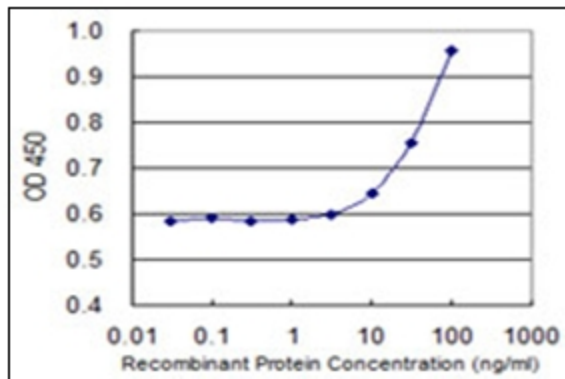
Carcinoembryonic antigen (CEA)-related cell adhesion molecule 1 (CEACAM1; also BGP) is a 160 kDa member of the CEACAM branch of the CEA gene family of the immunoglobulin superfamily. It is one of seven human CEACAM subfamily genes that are essentially divided equally between type I trans-membrane proteins (CEACAM1, 3-4) and GPI-linked molecules (CEACAM5-8). There is no CEACAM2 in human. The gene for human CEACAM1 codes for a 526 amino acid (aa) type I transmembrane protein that contains a 34 aa signal sequence, a 394 aa extracellular domain (ECD), a 24 aa transmembrane segment, and a 74aa cytoplasmic region. The ECD contains one N-terminal V-type followed by three C2-type Ig-like domains. It shows considerable glycosylation. There are three soluble and seven transmembrane isoforms. The three soluble forms also contain the first two C2-type Ig like domains (aa's 145-317), with differences coming in the third C2-type Ig-like domain. The seven transmembrane isoforms are highly divergent. Full-length mouse and rat CEACAM1 are approximately 57% aa identical to human CEACAM1; in the V-type Ig-like domain, they are 58% and 56% aa identical, respectively. The full-length molecule is found on neutrophils, bile duct epithelium, activated NK cells, colonic columnar epithelium and endothelium.

Synonyms:

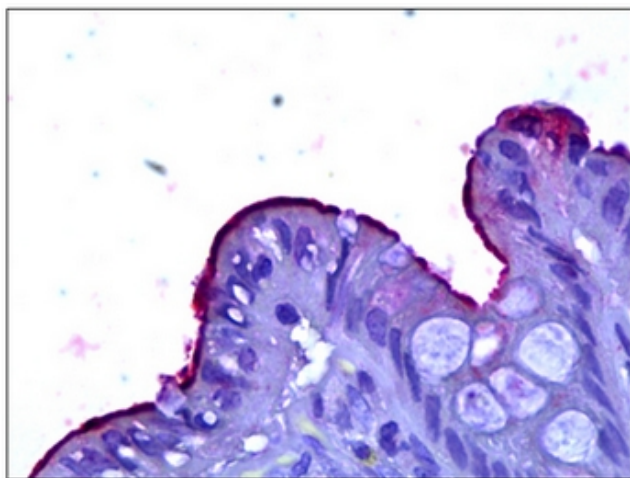
BGP, BGP1, Biliary glycoprotein 1

Protein Families:

Druggable Genome, Transmembrane

Product images:

Detection limit for recombinant GST tagged CEACAM1 is 3 ng/ml as a capture antibody.



Human Colon: Formalin-Fixed, Paraffin-Embedded (FFPE)