

Product datasheet for **AM31925PU-N**

NKCC1 (SLC12A2) Mouse Monoclonal Antibody [Clone ID: 5H7]

Product data:

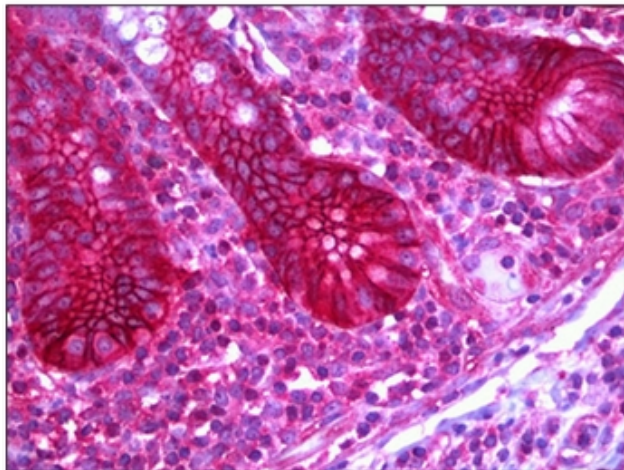
Product Type:	Primary Antibodies
Clone Name:	5H7
Applications:	ELISA, IHC, WB
Recommended Dilution:	ELISA. Immunohistochemistry on Paraffin Sections: 5 µg/ml. Western Blot.
Reactivity:	Human
Host:	Mouse
Isotype:	IgG2b
Clonality:	Monoclonal
Immunogen:	Recombinant protein
Specificity:	This antibody recognizes Human SLC12A2 / NKCC1.
Formulation:	PBS, pH 7.4 State: Purified State: Liquid purified Ig fraction
Concentration:	lot specific
Purification:	Protein A Chromatography
Conjugation:	Unconjugated
Storage:	Upon receipt, store the antibody undiluted (in aliquots) at -20°C or below. Avoid repeated freezing and thawing.
Stability:	Shelf life: one year from despatch.
Gene Name:	solute carrier family 12 member 2
Database Link:	Entrez Gene 6558 Human P55011
Background:	Electrically silent transporter system. Mediates sodium and chloride reabsorption. Plays a vital role in the regulation of ionic balance and cell volume. Belongs to the SLC12A transporter family and tissue specificity expressed in many tissues.



[View online »](#)

Synonyms: BSC; BSC2; MGC104233; NKCC1
Protein Families: Druggable Genome, Transmembrane
Protein Pathways: Vibrio cholerae infection

Product images:



Human Small Intestine: Formalin-Fixed, Paraffin-Embedded (FFPE)