

Product datasheet for **AM31924PU-N**

CLCA1 Mouse Monoclonal Antibody [Clone ID: 1C4]

Product data:

Product Type:	Primary Antibodies
Clone Name:	1C4
Applications:	ELISA, IHC, WB
Recommended Dilution:	ELISA. Immunohistochemistry on Paraffin Sections: 2.5 µg/ml. Western Blot: 1/500 - 1/1000.
Reactivity:	Human
Host:	Mouse
Isotype:	IgG2a
Clonality:	Monoclonal
Immunogen:	Recombinant protein
Specificity:	This antibody recognizes Human CLCA1.
Formulation:	PBS, pH 7.2 State: Purified State: Liquid purified Ig fraction
Concentration:	lot specific
Purification:	Protein A Chromatography
Conjugation:	Unconjugated
Storage:	Store the antibody undiluted at 2-8°C for one month or (in aliquots) at -20°C for longer. Avoid repeated freezing and thawing.
Stability:	Shelf life: one year from despatch.
Gene Name:	chloride channel accessory 1
Database Link:	Entrez Gene 1179 Human A8K7I4



[View online »](#)

Background:

CLCA1 belongs to the calcium sensitive chloride conductance protein family. To date, all members of this gene family map to the same site on chromosome 1p31-p22 and share high degrees of homology in size, sequence and predicted structure, but differ significantly in their tissue distributions. This gene product is expressed predominantly in the small intestine and colon mucosa, and may be involved in secretory or absorptive processes.

Synonyms:

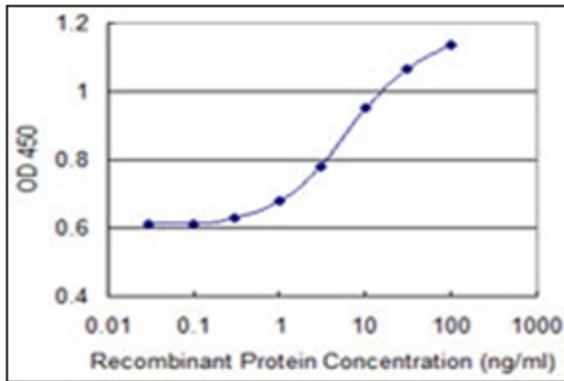
CACC1, CaCC-1

Protein Families:

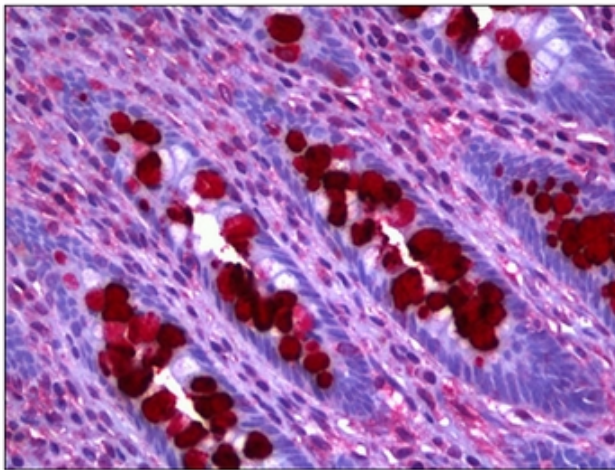
Druggable Genome, Ion Channels: Other

Protein Pathways:

Olfactory transduction

Product images:

Detection limit for recombinant GST tagged CLCA1 is 0.3 ng/ml as a capture antibody.



Human Colon, Goblet Cells: Formalin-Fixed, Paraffin-Embedded (FFPE)