

Product datasheet for **AM31923PU-N**

ATP6V1B2 Mouse Monoclonal Antibody [Clone ID: 2A5]

Product data:

Product Type:	Primary Antibodies
Clone Name:	2A5
Applications:	ELISA, IHC, WB
Recommended Dilution:	ELISA. Immunohistochemistry on Paraffin Sections: 5 µg/ml. Western Blot: 1/500 - 1/1000.
Reactivity:	Human
Host:	Mouse
Isotype:	IgG1
Clonality:	Monoclonal
Immunogen:	Recombinant protein
Specificity:	This antibody recognizes Human ATP6V1B2.
Formulation:	PBS, pH 7.2 State: Purified State: Liquid purified Ig fraction
Concentration:	lot specific
Purification:	Protein A Chromatography
Conjugation:	Unconjugated
Storage:	Store the antibody undiluted at 2-8°C for one month or (in aliquots) at -20°C for longer. Avoid repeated freezing and thawing.
Stability:	Shelf life: one year from despatch.
Gene Name:	ATPase H ⁺ transporting V1 subunit B2
Database Link:	Entrez Gene 526 Human P21281



[View online »](#)

Background:

ATP6V1B2 (ATPase, H⁺ transporting, lysosomal 56/58kDa, V1 subunit B2) is a non-catalytic subunit of the vacuolar ATPase (V-ATPase) responsible for acidifying a variety of intracellular compartments, and for the pH regulation of extracellular compartments. V-ATPase is a heteromultimeric enzyme composed of a peripheral catalytic V1 complex (subunits A-H) attached to an integral membrane V0 proton pore complex. The localisation of ATP6V1B2 to the olfactory epithelium has been studied due to the potential role of pH regulation of extracellular compartments in olfaction.

Synonyms:

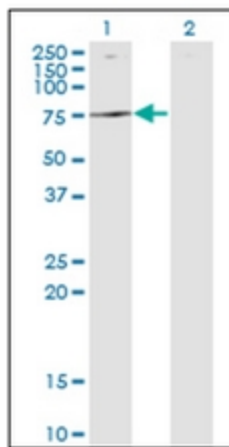
V-ATPase subunit B 2, ATP6B2, VPP3, HO57

Protein Families:

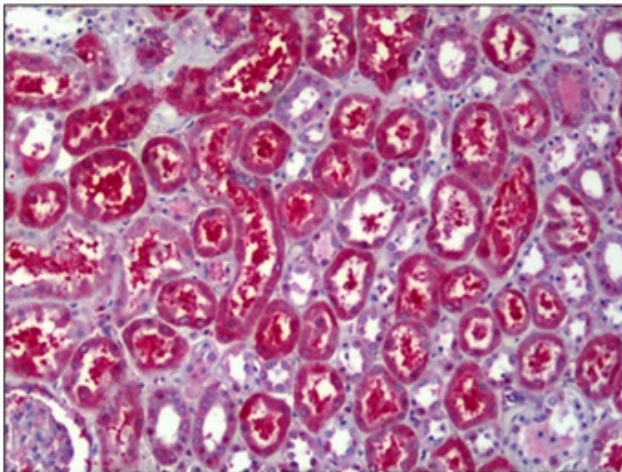
Druggable Genome

Protein Pathways:

Epithelial cell signaling in Helicobacter pylori infection, Metabolic pathways, Oxidative phosphorylation, Vibrio cholerae infection

Product images:

Western Blot analysis of ATP6V1B2 expression in transfected 293T cell line by ATP6V1B2 monoclonal antibody, clone 2A5.



Human Kidney, Tubules: Formalin-Fixed, Paraffin-Embedded (FFPE)